

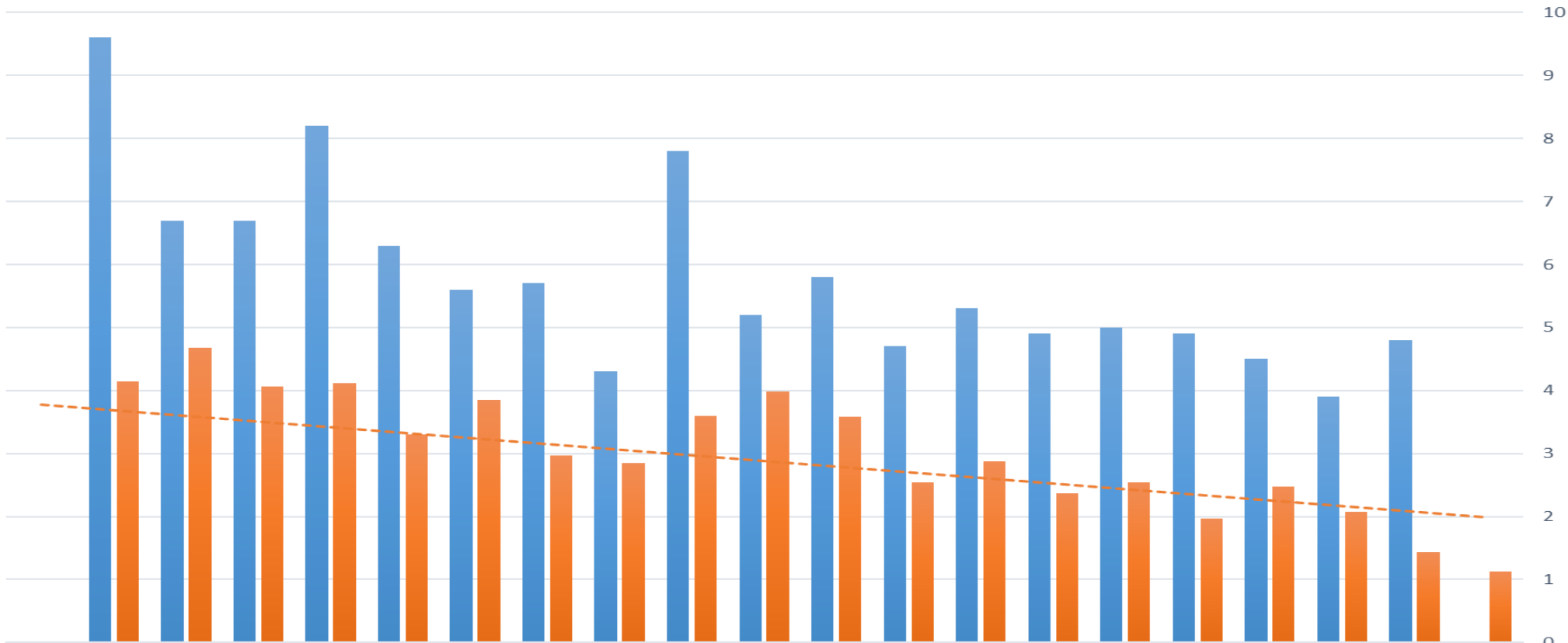


**mn** DEPARTMENT OF  
LABOR AND INDUSTRY



## MN Construction Industry Total Case Injury / Incidence Rates vs CHASE Participants (2022)

■ Construction Industry Rate    
 ■ CHASE Incident Rate    
 - - - Linear (CHASE Incident Rate)



	2003	2004	2005	2006	2007	2008	2009	2010	2011	2012	2013	2014	2015	2016	2017	2018	2019	2020	2021	2022
CHASE	4.15	4.68	4.07	4.12	3.3	3.85	2.97	2.85	3.6	3.99	3.59	2.54	2.88	2.37	2.54	1.97	2.48	2.08	1.43	1.12
Ind.	9.6	6.7	6.7	8.2	6.3	5.6	5.7	4.3	7.8	5.2	5.8	4.7	5.3	4.9	5	4.9	4.5	3.9	4.8	-



Minnesota OSHA / Associated General Contractors of Minnesota  
 Construction Health and Safety Excellence (CHASE) Partnership 2023 (2022)  
 Contractors Reported 2022 Work Hours = **33,074,783** Group Total Case Injury / Illness Rate: **1.12**  
**76.67%** Safer than the Minnesota Construction Industry 2019 Average Rate of **4.8**

NAICS Codes	Total Partners	CHASE 2020 Total Average Group Incident Rates	2019 BLS MN Construction Industry Average Group Incident Rates	CHASE Group Rates "VS" MN Industry Rates
236 Generals	<b>16</b>	<b>1.07</b>	3.5	<b>CHASE</b> Generals 69.43% Safer than MN Construction Industry Average <b>9,117,567</b> Work / Hours
237 Highway / Heavy	<b>16</b>	<b>1.04</b>	2.9	<b>CHASE</b> Highway / Heavy 64.14% Safer than MN Construction Industry Average <b>13,026,672</b> Work / Hours
238 Specialty	<b>16</b>	<b>1.26</b>	5.7	<b>CHASE</b> Specialty 77.89% Safer than MN Construction Industry Average <b>10,930,543</b> Work / Hours



**mn** DEPARTMENT OF  
LABOR AND INDUSTRY

