



## REQUEST FOR QUOTES

- ❖ **Project Name:** Three Rivers Park District Mississippi Gateway Regional Park Underpass
- ❖ **Project#:** S.P. 091-090-089 / Minn Proj. No. FLAP 2724 (107)
- ❖ **Bid Date/Time:** April 9<sup>th</sup>, 2024 @ 10am
- ❖ **Bid Docs:** <https://meyerci.sharefile.com/public/share/web-sb40dd711215e465ba9b406b9576f498b>

### Work Scopes Needed:

Saw Cutting	Asphalt/Bituminous	Street Sweeping	Curb & Gutter
Concrete Flatwork	RCP/Precast	Aggregates	Structural Concrete Suppliers
DI/PVC	Electrical	Pavement Markings/Striping	Landscaping/Trees & Shrubs
Sand Fill	Rebar	Erosion Control	

 Submit Quotes To: [estimating@meyerci.com](mailto:estimating@meyerci.com) 

### Project Description: **17.6 % DBE Goal**

The project generally consists of but is not limited to, pedestrian underpass box culvert, bituminous trail, lighting, and storm sewer related improvements. Please visit the plan room for the full spec book and a complete description of the project. **DBE Directory.** A directory of all certified DBEs in the state of Minnesota is available at the following link:

<http://mnucp.metc.state.mn.us/Default.aspx>. The Minnesota Unified Certification Program (MnUCP) maintains this directory. It is the definitive source of information regarding the DBE certification status of firms in Minnesota.

### Class of Work:

Parks, Recreation, Trail Work, Culverts, Waterways, Stormwater Channels, Construction, Retaining Walls, Side Walks, Curbs/Gutters, Concrete/Formed/Flatwork/Foundation Concrete Walkway, Concrete Pavement ADA Curb Ramps, Erosion Control/Slope, Bank Stabilization, Grade, Surface and Bridge, Grade & Surface, Bridge (replacement or rehabilitation), Excavation, Erosion Control - Temp. Landscaping (retaining walls) Misc. Parking Lots/Ramps Pedestrian Improvements; Dams/Reservoirs, Sitework/Excavating & Grading, Curbs, Paving (trail) Grubbing & Clearing, Bridges/Overpasses.

If you need assistance in obtaining bonding, lines of credit, insurance or would like assistance obtaining necessary equipment, supplies, materials, or any other related assistance, please contact Project Manager/Estimator, Sam Petefish at (763) 391-5997 or Andy Smith at (763) 391-5945 or [estimating@meyerci.com](mailto:estimating@meyerci.com)

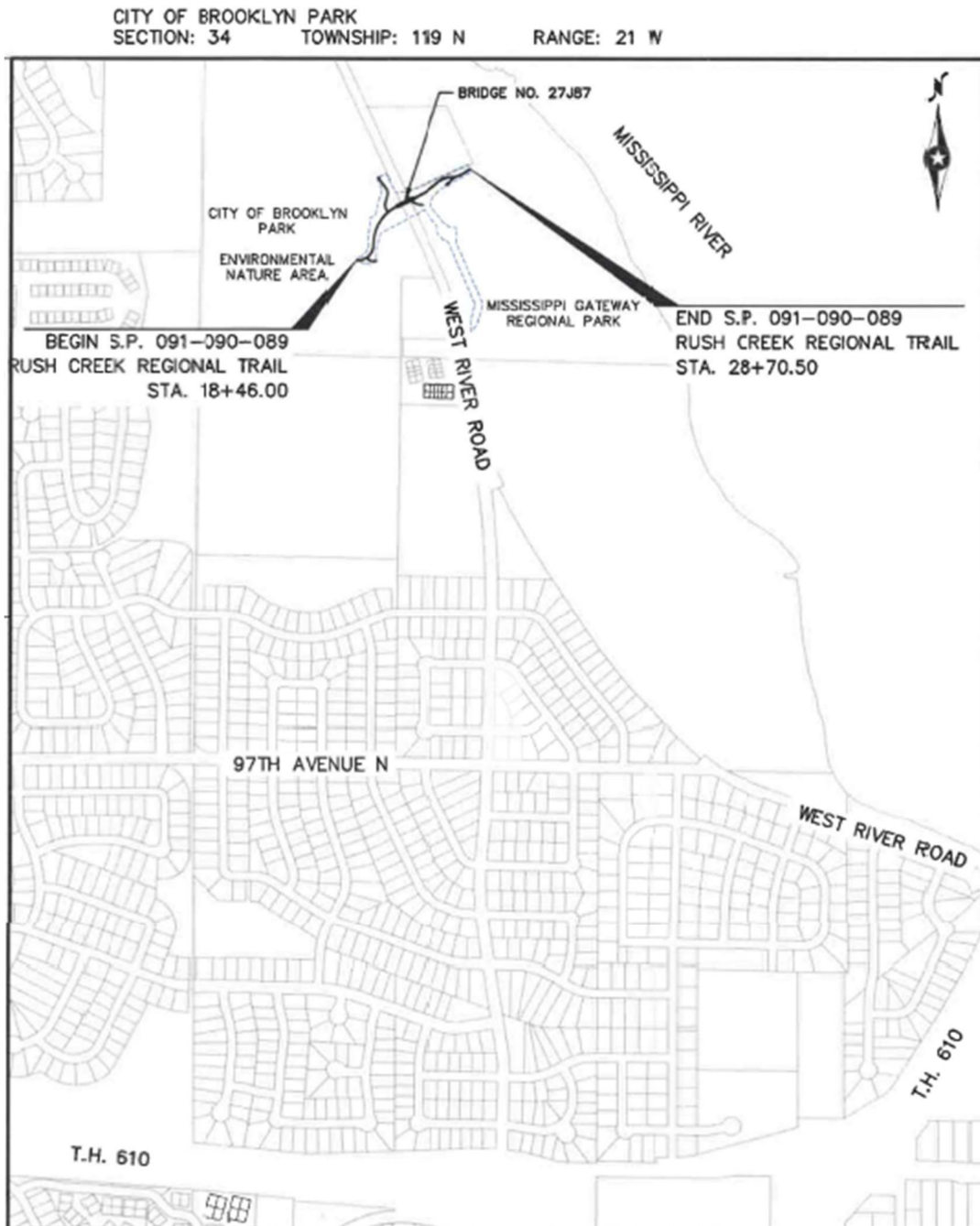
*Meyer Contracting is an Equal Opportunity/Affirmative Action Employer. Minorities, women, disabled, and veterans are encouraged to apply for available openings.*

11000 93rd Ave N • Maple Grove, MN 55369  
Phone: 763.391.5959 • Fax: 763.391.5960 [www.meyerci.com](http://www.meyerci.com)



## REQUEST FOR QUOTES

### Project Location(s):



If you need assistance in obtaining bonding, lines of credit, insurance or would like assistance obtaining necessary equipment, supplies, materials, or any other related assistance, please contact Project Manager/Estimator, Sam Petefish at (763) 391-5997 or Andy Smith at (763) 391-5945 or [estimating@meyerci.com](mailto:estimating@meyerci.com)

*Meyer Contracting is an Equal Opportunity/Affirmative Action Employer. Minorities, women, disabled, and veterans are encouraged to apply for available openings.*

11000 93rd Ave N • Maple Grove, MN 55369  
Phone: 763.391.5959 • Fax: 763.391.5960 [www.meyerci.com](http://www.meyerci.com)



## REQUEST FOR QUOTES

### UNIT PRICING

Item Code	Item Description	UofM	Quantity
Base Bid Section			
2011.601	AS BUILT	LUMP SUM	1
2021.501	MOBILIZATION	LUMP SUM	1
2104.502	FILL AND ABANDON PIPE SEWER	LIN FT	500
2104.502	REMOVE DRAINAGE STRUCTURE	EACH	1
2104.502	REMOVE PIPE APRON	EACH	1
2104.502	SALVAGE SIGN TYPE C	EACH	4
2104.502	SALVAGE BOLLARD	EACH	4
2104.503	REMOVE PIPE SEWER	LIN FT	225
2104.503	REMOVE FENCE	LIN FT	65
2104.503	SAWING CONCRETE PAVEMENT (FULL DEPTH)	LIN FT	20
2104.503	SAWING BIT PAVEMENT (FULL DEPTH)	LIN FT	250
2104.504	REMOVE BITUMINOUS PAVEMENT	SQ YD	1175
2104.504	REMOVE CONCRETE WALK	SQ YD	10
2106.507	EXCAVATION - COMMON (EV)	CU YD	12520
2106.507	EXCAVATION - SUBGRADE (EV)	CU YD	200
2106.507	COMMON EMBANKMENT (CV)	CU YD	840
2106.507	SELECT GRANULAR EMBANKMENT (CV)	CU YD	2980
2123.61	STREET SWEEPER (WITH PICKUP BROOM)	hour	24
2211.509	AGGREGATE BASE CLASS 5	TON	1215
2360.509	TYPE SP 9.5 WEARING COURSE MIX (2,B)	TON	415
2360.509	TYPE SP 9.5 WEARING COURSE MIX (3,B)	TON	145
2360.509	TYPE SP 12.5 NON WEARING COURSE MIX (3,B)	TON	85
2401.503	TYPE CURB BARRIER CONCRETE (3S52)	LIN FT	227
2401.507	STRUCTURAL CONCRETE (1G52)	CU YD	72
2401.507	STRUCTURAL CONCRETE (3G52)	CU YD	217
2401.508	REINFORCEMENT BARS	POUND	8580
2401.508	REINFORCEMENT BARS (EPOXY COATED)	POUND	30950
2401.601	STRUCTURE EXCAVATION	LUMP SUM	1
2411.602	ARCHITECTURAL CONCRETE EMBLEM	EACH	2
2411.603	SOLDIER PILE WALL POST TYPE 1	LIN FT	745
2411.603	SOLDIER PILE WALL POST TYPE 2	LIN FT	330
2411.618	ARCH SURFACE FINISH (SINGLE COLOR)	SQ FT	3175
2411.618	ARCH CONC TEXTURE (CUT STONE)	LIN FT	3175
2412.503	16X11 PRECAST CONCRETE BOX CULVERT	LIN FT	110
2451.507	FINE AGGREGATE BEDDING (CV)	LIN FT	320
2452.601	STEEL SHEET PILING (TEMPORARY)	LUMP SUM	1
2475.503	ORNAMENTAL METAL RAILING DESIGN T-5 PC	LIN FT	386
2481.601	MEMBRANE WATERPROOFING SYSTEM	LUMP SUM	1
2501.502	12" RC PIPE APRON	EACH	1
2501.502	24" RC PIPE APRON	EACH	1
2501.602	TRASH GUARD FOR 12" PIPE APRON	EACH	1
2501.602	TRASH GUARD FOR 24" PIPE APRON	EACH	1
2502.601	DRAINAGE SYSTEM	LUMP SUM	1
2503.503	8" PVC PIPE SEWER	LIN FT	186

11000 93rd Ave N • Maple Grove, MN 55369

Phone: 763.391.5959 • Fax: 763.391.5960 [www.meyerci.com](http://www.meyerci.com)





## REQUEST FOR QUOTES

### UNIT PRICING

2503.503 12" RC PIPE SEWER DESIGN 3006 CLASS V	LIN FT	122
2503.503 15" RC PIPE SEWER DESIGN 3006 CLASS V	LIN FT	300
2503.503 24" RC PIPE SEWER DESIGN 3006 CLASS III	LIN FT	660
2503.602 CONSTRUCT BULKHEAD	EACH	8
2503.602 CONNECT TO EXISTING STORM SEWER	EACH	1
2503.603 24" HDPE PIPE SEWER-DIRECTIONAL DRILL	LIN FT	291
2506.502 CASTING ASSEMBLY	EACH	8
2506.503 CONSTRUCT DRAINAGE STRUCTURE DESIGN H	LIN FT	7
2506.503 CONSTRUCT DRAINAGE STRUCTURE DESIGN 48-4020	LIN FT	80
2511.507 RANDDOM RIPRAP CL III	CU YD	15
2521.518 4" CONCRETE WALK	SQ FT	90
2540.602 BOLLARD	EACH	1
2540.602 INSTALL BOLLARD	EACH	4
2545.501 CONDUIT SYSTEM	LUMP SUM	1
2545.502 LIGHT FOUNDATION DESIGN E MODIFIED	EACH	8
2545.502 LIGHTING UNIT TYPE SPECIAL 1	EACH	8
2545.502 LIGHTING UNIT TYPE SPECIAL 2	EACH	4
2545.502 UNDERGROUND CABLE SPLICE	EACH	2
2545.503 0.75" RIGID STEEL CONDUIT	LIN FT	100
2545.503 1.5" NON-METALLIC CONDUIT	LIN FT	1300
2545.503 UNDERGROUND WIRE 3/C 2AWG	LIN FT	100
2545.503 UNDERGROUND WIRE 1/C 6 AWG	LIN FT	550
2545.503 UNDERGROUND WIRE 1/C 8 AWG	LIN FT	1750
2545.503 UNDERGROUND WIRE 1/C 10 AWG	LIN FT	2200
2563.601 TRAFFIC CONTROL	LUMP SUM	1
2563.601 ALTERNATE PEDESTRIAN ROUTE	LUMP SUM	1
2564.502 INSTALL SIGN TYPE C	EACH	4
2564.502 SIGN TYPE C	SQ FT	20.25
2572.503 TEMPORARY FENCE	LIN FT	1500
2572.51 PRUNE TREES	HOURL	8
2573.501 STABILIZED CONSTRUCTION EXIT	LUMP SUM	1
2573.502 STORM DRAIN INLET PROTECTION	EACH	6
2573.503 SILT FENCE, TYPE MS	LIN FT	1600
2573.503 SEDIMENT CONTROL LOG TYPE WOOD FIBER	LIN FT	650
2574.505 SUBSOILING	ACRE	2
2574.505 SOIL BED PREPARATION	ACRE	3
2574.507 COMMON TOPSOIL BORROW	CU YD	550
2574.508 FERTILIZER TYPE 2	POUND	900
2575.504 ROLLED EROSION PREVENTION CATEGORY 25	SQ YD	1500
2575.505 SEEDING	ACRE	3
2575.505 RAPID STABILIZATION METHOD 2	ACRE	2
2575.508 HYDRAULIC MULCH MATRIX	POUND	4300
2575.508 HYDRAULIC BONDED FIBER MATRIX	POUND	4300
2575.508 SEED MIXTURE SPECIAL	POUND	300
2575.508 SEED MIXTURE 35-241	POUND	50
2575.523 WATER	MGAL	120

11000 93rd Ave N • Maple Grove, MN 55369

Phone: 763.391.5959 • Fax: 763.391.5960 [www.meyerci.com](http://www.meyerci.com)



## REQUEST FOR QUOTES

### UNIT PRICING

2582.503 4" DOUBLE SOLID LINE MULTI COMP	LIN FT	140
2582.503 4" SOLID LINE MULTI COMP	LIN FT	280
2582.503 4" SOLID LINE PAINT	LIN FT	470
2582.503 4" BROKEN LINE PAINT	LIN FT	280