



REQUEST FOR QUOTES

- ❖ **Project Name:** White Bear Lake CSAH 60/Otter Rd. Improvements
- ❖ **Project#:** Ramsey County - SAP 062-660-014; SAP 174-020-025
- ❖ **Bid Date/Time:** April 4th, 2024 @ 2:00pm
- ❖ **Bid Docs:** <https://meyerci.sharefile.com/public/share/web-s36ad60eecb104755a7df6cebdf7df0d0>

Work Scopes Needed:

Traffic Control	Clearing & Grubbing
Concrete Flatwork	Asphalt Paving
Erosion Control / Landscaping	Pavement Markings
PVC/DIP	As-Builds
RCP/Precast	Street Sweeping
Saw Cutting	Aggregates/Disposal

 Submit Quotes To: estimating@meyerci.com 

Project Description: **15% SBE Goal**

The county of Ramsey has adopted the Principles for Inclusiveness in Contracting Program ("IICP") in order to increase the participation of small businesses ("SBEs") in the county's purchasing activities. The contracting inclusion goal for this Project is: 15%. Please visit the Central CERT System at <https://cert.smwbe.com/Default.asp> for more information & resources.

Class of Work:

The project consists of construction improvements along Otter Lake Road. The project includes grading, bituminous surfacing, ADA improvements, concrete curb & gutter, and utility improvements.

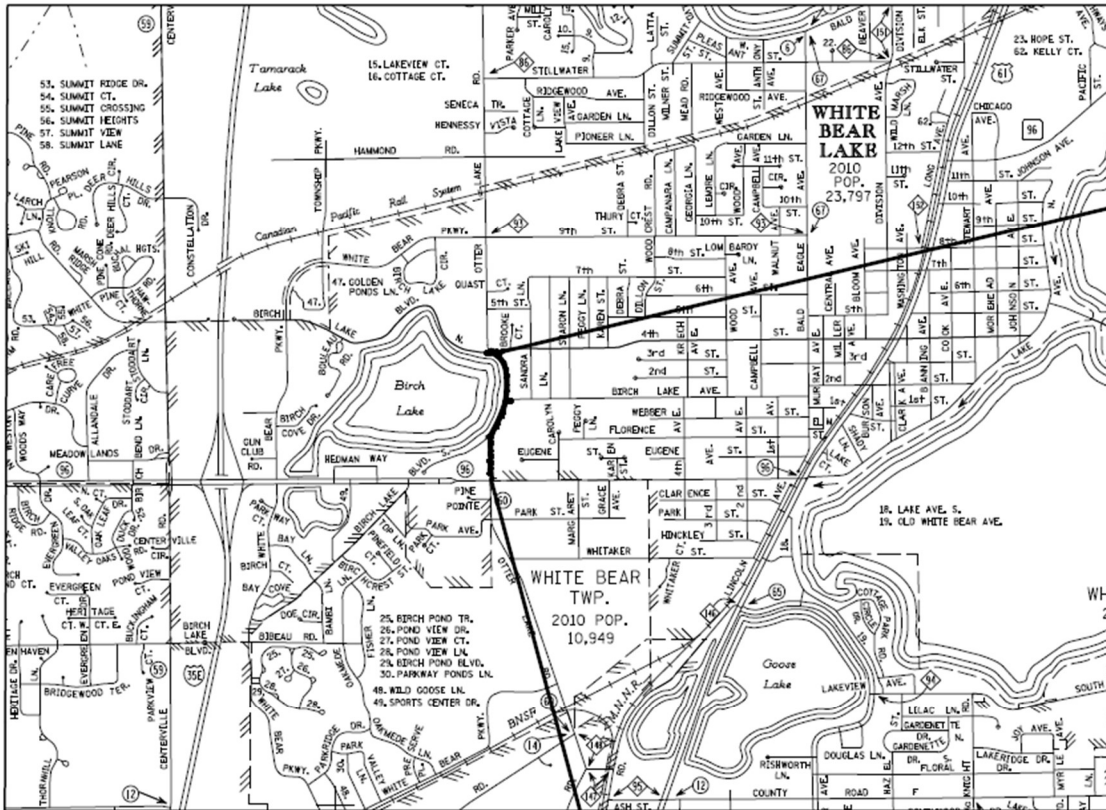
If you need assistance in obtaining bonding, lines of credit, insurance or would like assistance obtaining necessary equipment, supplies, materials, or any other related assistance, please contact, Josh Lindquist, Project Manager/Estimator at (763) 391-5972 or spellitier@meyerci.com

Meyer Contracting is an Equal Opportunity/Affirmative Action Employer. Minorities, women, disabled, and veterans are encouraged to apply for available openings.



REQUEST FOR QUOTES

Project Location(s):



**END S.A.P. 062-660-014,
S.A.P. 174-020-024
C.S.A.H. 60/OTTER LAKE ROAD
STA. 32+47.61**

**BEGIN S.A.P. 062-660-014,
S.A.P. 174-020-024
C.S.A.H. 60/OTTER LAKE ROAD
STA. 9+82.33**

Meyer Contracting is an Equal Opportunity/Affirmative Action Employer. Minorities, women, disabled, and veterans are encouraged to apply for available openings.



REQUEST FOR QUOTES

UNIT PRICING

RAMSEY COUNTY PUBLIC WORKS

PROJECT NUMBER: P-8030

ITEM NO.	DESCRIPTION	UNITS	QTY
2011.601	AS BUILT	SUM	1
2021.501	MOBILIZATION	LUMP SUM	1
2101.502	CLEARING	EACH	9
2101.502	GRUBBING	EACH	9
2101.505	CLEARING	ACRE	0.01
2101.505	GRUBBING	ACRE	0.01
2102.503	PAVEMENT MARKING REMOVAL	LIN FT	100
2102.518	PAVEMENT MARKING REMOVAL	SQ FT	100
2104.502	REMOVE SIGN	EACH	23
2104.502	SALVAGE HYDRANT	EACH	2
2104.502	SALVAGE SIGN	EACH	8
2104.502	SALVAGE SIGN PANEL	EACH	1
2104.503	SAWING CONCRETE PAVEMENT (FULL DEPTH)	LIN FT	82
2104.503	SAWING BIT PAVEMENT (FULL DEPTH)	LIN FT	520
2104.503	REMOVE PIPE CULVERTS	LIN FT	355
2104.503	REMOVE WATER MAIN	LIN FT	129
2104.503	REMOVE SEWER PIPE (STORM)	LIN FT	9
2104.503	REMOVE CURB & GUTTER	LIN FT	842
2104.503	REMOVE RETAINING WALL	LIN FT	86
2104.504	REMOVE CONCRETE DRIVEWAY PAVEMENT	SQ YD	68
2104.504	REMOVE BITUMINOUS DRIVEWAY PAVEMENT	SQ YD	358
2104.504	REMOVE BITUMINOUS PAVEMENT	SQ YD	10247
2104.518	REMOVE BITUMINOUS WALK	SQ FT	2772
2104.518	REMOVE CONCRETE WALK	SQ FT	901
2104.518	REMOVE CONCRETE PAVEMENT	SQ FT	1129
2106.507	EXCAVATION - COMMON	CU YD	5605
2106.507	SELECT GRANULAR EMBARKMENT (CV)	CU YD	5813
2106.507	COMMON EMBANKMENT (CV)	CU YD	918
2123.610	TRACTOR MOUNTED BACKHOE	hour	50
2123.610	STREET SWEEPER (WITH PICKUP BROOM)	hour	100
2130.523	WATER	MGAL	100
2211.507	AGGREGATE BAE (CV) CLASS 6	CU YD	2558
2301.504	CONCRETE PAVEMENT 7.0	SQ YD	79
2357.506	BITUMINOUS MATERIALS FOR TACK COAT	GAL	8279
2360.509	TYPE SP 9.5 WEARING COURSE MIXTURE (3,B)	TON	299
2360.509	TYPE SP 12.5 NON WEARING COURSE MIXTURE (3,B)	TON	1299



REQUEST FOR QUOTES

UNIT PRICING

2360.509	TYPE SP 12.5 WEARING COURSE MIX (4:F)	TON	1819
2501.502	12" RC PIPE APRON	EACH	1
2501.502	27" RC PIPE APRON	EACH	1
2501.502	12" CS SAFETY APRON	EACH	12
2501.502	15" CS SAFETY APRON	EACH	8
2501.502	12" RC SAFETY APRON	EACH	1
2501.502	15" RC SAFETY APRON	EACH	1
2501.602	TRASH GUARD FOR 27" PIPE APRON	EACH	1
2502.503	12" PE PIPE DRAIN (SMOOTH)	LIN FT	113
2502.503	15" PE PIPE DRAIN (SMOOTH)	LIN FT	90
2502.601	DRAINAGE SYSTEM	LUMP SUM	1
2503.503	12" RC PIPE SEWER DES 3006 CL V	LIN FT	792
2503.503	15" RC PIPE SEWER DES 3006 CL V	LIN FT	138
2503.503	18" RC PIPE SEWER DES 3006 CL V	LIN FT	112
2503.503	24" RC PIPE SEWER DES 3006 CL III	LIN FT	36
2503.503	27" RC PIPE SEWER DES 3006 CL III	LIN FT	86
2504.602	INSTALL HYDRANT	EACH	2
2504.602	CONNECT TO EXISTING WATER MAIN	EACH	2
2504.603	20" WATERMAIN DUCTILE IRON CL 52	LIN FT	150
2506.502	CASTING ASSEMBLY	EACH	20
2506.502	CONST DRAINAGE STRUCTURE DESIGN N	EACH	13
2506.503	CONST DRAINAGE STRUCTURE SD-48	LIN FT	3
2506.503	CONST DRAINAGE STRUCTURE DES 48-4020	LIN FT	35
2506.503	CONST DRAINAGE STRUCTURE DES 60-4020	LIN FT	34
2506.503	CONST DRAINAGE STRUCTURE DES 72-4020	LIN FT	5
2506.503	RECONSTRUCT DRAINAGE STRUCTURE	LIN FT	4
2506.602	CONNECT INTO EXISTING DRAINAGE STRUCTURE	EACH	1
2521.518	4" CONCRETE WALK	SQ FT	8200
2521.518	6" CONCRETE WALK	SQ FT	1638
2521.602	DRILL AND GROUT REINF BAR (EPOXY COATED)	EACH	254
2531.503	CONCRETE CURB & GUTTER DESIGN B618	LIN FT	208
2531.503	CONCRETE CURB & GUTTER DESIGN B624	LIN FT	2850
2531.504	6" CONCRETE DRIVEWAY PAVEMENT	SQ YD	211
2531.618	TRUNCATED DOMES	SQ FT	292
2540.602	RELOCATE MAIL BOX SUPPORT	EACH	18
2554.502	GUIDE POST TYPE B	EACH	24
2557.503	WIRE FENCE DESIGN 60V-9322	LIN FT	75
2563.601	TRAFFIC CONTROL	LUMP SUM	1
2563.601	ALTERNATIVE PEDESTRIAN ROUTE	LUMP SUM	1
2564.502	INSTALL SIGN PANEL	EACH	1
2564.502	INSTALL SIGN	EACH	8
2564.602	DELINEATOR / MARKER	EACH	2
2564.602	DELINEATOR / MARKER PANEL	EACH	2



REQUEST FOR QUOTES

UNIT PRICING

ITEM NO.	DESCRIPTION	UNITS	QTY
2564.618	SIGN	SQ FT	319
2572.503	TEMPORARY FENCE	LIN FT	150
2573.501	STABILIZED CONSTRUCTION EXIT	LUMP SUM	1
2573.501	EROSION CONTROL SUPERVISOR	LUMP SUM	1
2573.502	STORM DRAIN INLET PROTECTION	EACH	18
2573.502	CULVERT END CONTROLS	EACH	15
2573.503	SILT FENCE, TYPE MS	LIN FT	1776
2573.503	FLOTATION SILT CURTAIN TYPE STILL WATER	LIN FT	1549
2573.503	SEDIMENT CONTROL LOG TYPE WOOD	LIN FT	1772
2574.505	SUBSOILING	ACRE	0
2574.505	SOIL BED PREPARATION	ACRE	1
2574.507	TOPSOIL BORROW (CV)	CU YD	638
2574.508	FERTILIZER TYPE 1	POUND	94
2574.508	FERTILIZER TYPE 3	POUND	160
2574.508	FERTILIZER TYPE 4	POUND	117
2575.504	RAPID STABILIZATION METHOD 4	SQ YD	1616
2575.504	ROLLED EROSION PREVENTION CATEGORY 25	SQ YD	1616
2575.505	SEEDING	ACRE	0.79
2575.505	WEED SPRAYING	ACRE	0.42
2575.505	RAPID STABILIZATION METHOD 2	ACRE	0.46
2575.506	WEED SPRAY MIXTURE	GAL	0.24
2575.508	SEED MIXTURE 21-112	POUND	48
2575.508	SEED MIXTURE 25-151	POUND	56
2575.508	SEED MIXTURE 32-241	POUND	15
2575.508	SEED MIXTURE 33-261	POUND	14
2575.508	HYDRAULIC MULCH MATIX	POUND	1372
2582.503	4" SOLID LINE MULTI COMP GR IN (WR)	LIN FT	4800
2582.503	4" DOTTED LINE MULTI COMP GR IN (WR)	LIN FT	63
2582.503	4" DBLE SOLID LINE MULTI COMP GR IN (WR)	LIN FT	2300
2582.503	24" SOLID LINE MULTI COMP GR IN (24)	LIN FT	75
2582.518	CROSSWALK MULTI COMP GR IN (WR)	SQ FT	600