



## REQUEST FOR QUOTES

- ❖ **Project Name:** Deephaven L48 Rehab M449, FM & 6-DH-645 Replacement
- ❖ **Project#:** MCES Project #:802834/Owner Project #:22P043
- ❖ **Bid Date/Time:** April 24<sup>th</sup>, 2024 @ 2:00pm
- ❖ **Bid Docs:** <https://meyerci.sharefile.com/public/share/web-sbf948ac63c434d089bcf4d665ecd15b2>

### Work Scopes Needed:

Surveying/As built	Dewatering	Temp. Conveyance/Bypass	Wet Tapping
Landscape/Erosion Control	Abandonment/Sandfill	Guardrail	Clearing & Grubbing
Televising/Cleaning	Asphalt Paving	Concrete Flatwork	Directional Drilling
CIPP Lining	Fencing	Electrical	Aggregates (Supplier)
PVC/DIP (Supplier)	RCP/Precast (Supplier)	Geotextile Fabric (Supplier)	

 **Submit Quotes To:** [estimating@meyerci.com](mailto:estimating@meyerci.com) 

### Project Description: **12% DBE goal**

This rehabilitation project is located in Deephaven and will include electrical, pump and piping upgrades. A new meter valve vault, directionally drilled 12-inch forcemain and 1100 feet of gravity sewer will be installed.

### Class of Work:

Miscellaneous, Construction, Sidewalks/Curbs/Gutters, Directional Drilling, Landscaping, Erosion Control/Slope, Bank Stabilization, Sitework/Excavating & Grading, Painting, Traffic Control, Curbs, Excavation, Erosion Control - Temporary, Electrical.

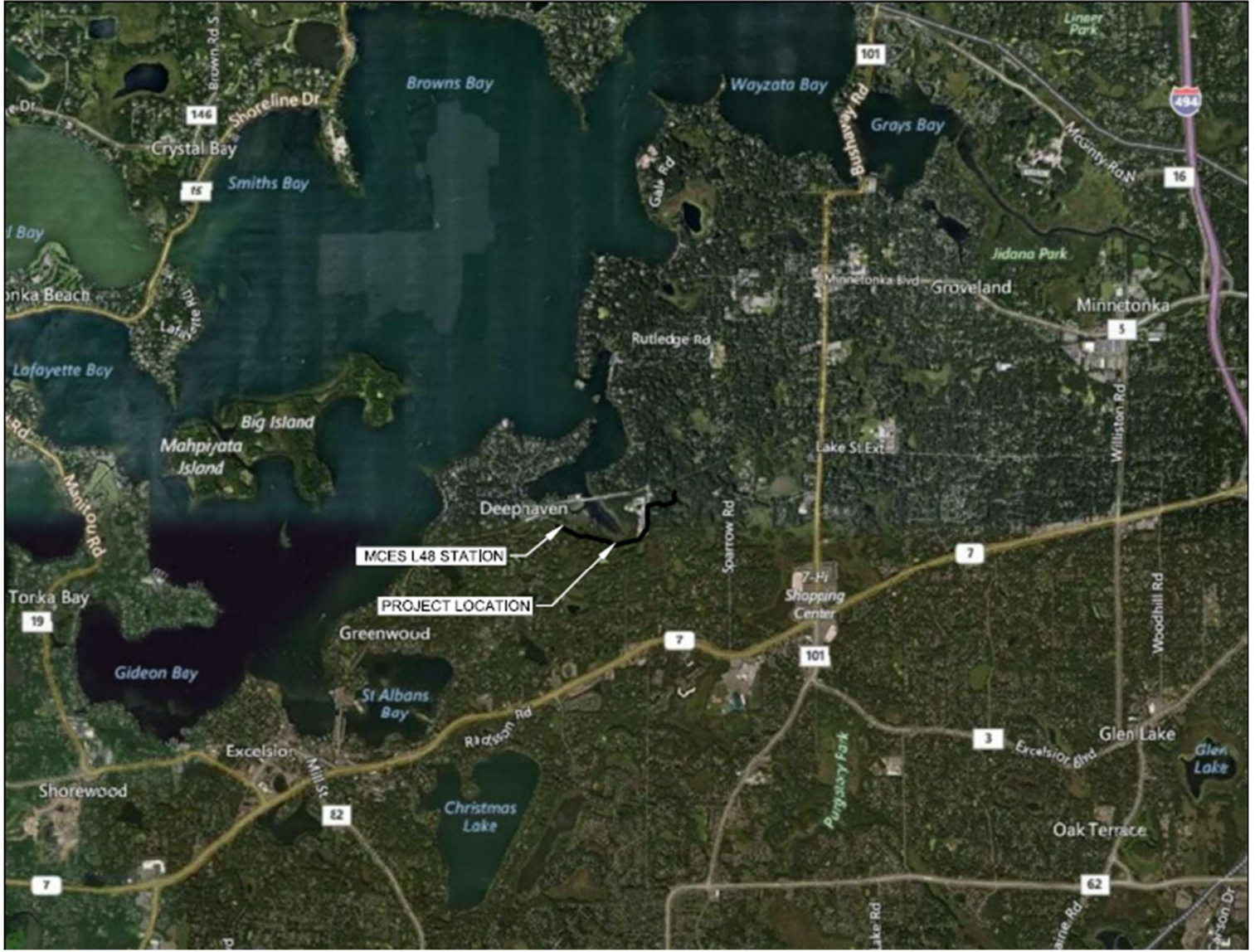
If you need assistance in obtaining bonding, lines of credit, insurance or would like assistance obtaining necessary equipment, supplies, materials, or any other related assistance, please contact Project Manager/Estimator, Josh Lindquist at (763) 391-5972 or [estimating@meyerci.com](mailto:estimating@meyerci.com)



## REQUEST FOR QUOTES

*Meyer Contracting is an Equal Opportunity/Affirmative Action Employer. Minorities, women, disabled, and veterans are encouraged to apply for available openings.*

### Project Location(s):





## REQUEST FOR QUOTES

### UNIT PRICING

MOBILIZATION	LS	1
FIELD ENGINEERING	LS	1
DEWATERING	LS	1
TEMPORARY TRACK OUT CONTROL MAT	EA	4
TEMPORARY CONVEYANCE	LS	1
WET TAPPING AND LINE STOPPING	LS	2
TRAFFIC CONTROL	LS	1
L48 ISOLATION VAULT REMOVAL	LS	1
EROSION CONTROL BLANKET	SY	1333
SILT FENCE	LF	2421
SEDIMENT CONTROL LOG	LF	2741
INLET PROTECTION	EA	4
STREET SWEEPING	HR	200
FORCEMAIN REMOVAL - 6" DIP	LF	22
FORCEMAIN REMOVAL - 8" DIP	LF	85
FORCEMAIN REMOVAL - 10" DIP	LF	189
FORCEMAIN ABANDONMENT - 10" DIP	LF	2494
GRAVITY SEWER REMOVAL - 8" PVC	LF	104
GRAVITY SEWER REMOVAL - 15" ABS	LF	971
GRAVITY SEWER REMOVAL - 21" RCP	LF	147
GRAVITY SEWER ABANDONMENT - 15" ABS	LF	220
SANITARY MAINTENANCE HOLE REMOVAL	EA	6
FORCEMAIN STRUCTURE ABANDONMENT	EA	1
SANITARY MAINTENANCE HOLE ABANDONMENT	EA	1
STORM SEWER REMOVAL - 12" CMP	LF	45
WATERMAIN REMOVAL - 8" DIP	LF	312
BITUMINOUS PAVEMENT REMOVAL	SY	6543
TEMPORARY PAVEMENT REMOVAL	SY	4235
CURB AND GUTTER REMOVAL	LF	35
BITUMINOUS CURB REMOVAL	LF	31
REMOVE AND REPLACE GUARDRAIL	LF	37
REMOVE, SALVAGE, AND REINSTALL SCHOOL LIGHT POLE AND REMOVE AND REPLACE LIGHT POLE BASE	EA	1
REMOVE DRIVEWAY APRON	SY	230
REMOVE SIDEWALK	SY	4

If you need assistance in obtaining bonding, lines of credit, insurance or would like assistance obtaining necessary equipment, supplies, materials, or any other related assistance, please contact Project Manager/Estimator, Josh Lindquist at (763) 391 or [estimating@meyerci.com](mailto:estimating@meyerci.com)





## REQUEST FOR QUOTES

*Meyer Contracting is an Equal Opportunity/Affirmative Action Employer. Minorities, women, disabled, and veterans are encouraged to apply for available openings.*

### UNIT PRICING

CLEARING AND GRUBBING	ACRE	0.05
TREE REMOVAL	EA	14
SANITARY SEWER AND FORCE MAIN CLEANING	LF	5212
TELEVISIONING	LF	6982
BITUMINOUS PAVEMENT	TON	2300
TEMPORARY PAVEMENT	TON	1500
DRIVEWAY APRON	TON	336
ADJUST CASTING	EA	3
CONCRETE CURB AND GUTTER	LF	35
BITUMINOUS CURB	LF	31
SIDEWALK	SY	4
AGGREGATE BASE CLASS 5	TON	3192
SELECT GRANULAR BORROW	CY	4140
OVEREXCAVATION	CY	120
GEOTEXTILE FABRIC	SY	6492
HORIZONTAL DIRECTIONAL DRILLING - 12" HDPE DIPS PIPE DR11	LF	2093
10" FORCEMAIN CIPP GLASS-REINFORCED LINER	LF	980
CIPP LINING ACCESS PIT	EA	4
EX AR17A MODIFICATIONS	LS	1
EX CO20A MODIFICATIONS	LS	1
12" HDPE DIPS PIPE DR11 OPEN CUT INSTALLATION	LF	247
CONNECT TO L48 LIFT STATION	EA	6
CONNECT TO LS9 LIFT STATION	EA	1
CONCRETE ENCASEMENT OF SANITARY SEWER	LF	102
L48 LIFT STATION IMPROVEMENTS	LS	1
L48 LIFT STATION WOOD FENCE AND GATES	LF	140
L48 LIFT STATION ELECTRICAL AND CONTROLS	LS	1
L48 ISOLATION VAULT	LS	1
M449 FLOW METER POLYMER STRUCTURE	EA	1
AIR RELEASE FORCEMAIN POLYMER STRUCTURE	EA	3
SANITARY MAINTENANCE HOLE - 48" POLYMER	LF	96
FORCE MAIN - 4" DIP	LF	20
SANITARY SEWER - 8" PVC SDR26	LF	147
SANITARY SEWER - 16" PVC C900	LF	1047
SANTARY SEWER - 20" PVC C900	LF	134
FM STRUCTURE DRAIN - 4" PVC SDR26	LF	55

If you need assistance in obtaining bonding, lines of credit, insurance or would like assistance obtaining necessary equipment, supplies, materials, or any other related assistance, please contact Project Manager/Estimator, Josh Lindquist at (763) 391 or [estimating@meyerci.com](mailto:estimating@meyerci.com)



## REQUEST FOR QUOTES

*Meyer Contracting is an Equal Opportunity/Affirmative Action Employer. Minorities, women, disabled, and veterans are encouraged to apply for available openings.*

### UNIT PRICING

SANITARY SEWER - 8" PVC SDR26	LF	147
SANITARY SEWER - 16" PVC C900	LF	1047
SANTARY SEWER - 20" PVC C900	LF	134
FM STRUCTURE DRAIN - 4" PVC SDR26	LF	55
CONNECT TO EXISTING SANITARY SEWER	EA	5
CONNECT TO EXISTING SANITARY SEWER SERVICE - 4" ABS	EA	1
CONNECT TO EXISTING SANITARY SEWER SERVICE - 6" ABS	EA	10
CONNECT TO EXISTING SANITARY SEWER SERVICE - 10" ABS	EA	1
STORM SEWER- 12" CMP	LF	45
WATERMAIN - 8" DIP	LF	312
CONNECT TO EX 8" DIP WM	EA	2
REMOVE AND REPLACE HYDRANT AND GATE VALVE & BOX	EA	1
WATERMAIN 8-IN INSERTION WEDGE GATE VALVE & BOX	EA	2
TEMPORARY WATER SUPPLY SYSTEM	LS	1
PIPE INSULATION	SF	944
SEED MIXTURE - 25-131	AC	0.3
TOPSOIL - 6" THICK	CY	242
UTILITY RELOCATION ALLOWANCE	LS	1
DIRECT TIME AND MATERIAL ALLOWANCE	LS	1
LANDSCAPE ALLOWANCE	LS	1
COUNCIL ADMINISTRATIVE OFFICE	LS	1

If you need assistance in obtaining bonding, lines of credit, insurance or would like assistance obtaining necessary equipment, supplies, materials, or any other related assistance, please contact Project Manager/Estimator, Josh Lindquist at (763) 391 or [estimating@meyerci.com](mailto:estimating@meyerci.com)

*Meyer Contracting is an Equal Opportunity/Affirmative Action Employer. Minorities, women, disabled, and veterans are encouraged to apply for available openings.*

11000 93rd Ave N • Maple Grove, MN 55369  
Phone: 763.391.5959 • Fax: 763.391.5960 [www.meyerci.com](http://www.meyerci.com)

