



REQUEST FOR QUOTES

- ❖ **Project Name:** St Louis Park 2024 Cedar Lake Road Reconstruction
- ❖ **Project#:** City Proj. #: 4023-1100 / SP #: 163-296-006
- ❖ **Bid Date/Time:** May 3rd, 2024 @ 10:0am
- ❖ **Bid Docs:** <https://meyerci.sharefile.com/public/share/web-s2936c260bd2a4d2988ae4e52acd5d236>

Work Scopes Needed:

Field Office	Grubbing	Electrical	Mailbox Support
Sawing	Retaining Wall - salvage & reinstall	Fence - Wire	Fence - salvage & reinstall
Aggregates	Dewatering	Sign Special - salvage & reinstall	Abandon Pipe/Sand Fill
Castings	Joint Adhesive	Street Sweeping	Asphalt Paving
Haul/Disposal of Contaminated Materials	Concrete Steps	DI & PVC Pipe	Concrete Cub & Gutter Flatwork
Hydrants	Landscape Monument	Drill & Grout Rebar	Traffic Control/Signs
RCP & Structures	Modular Block Retaining Wall	Landscaping/Trees	Topsoil
Watermain Ductile Iron/Fittings	Pavement Markings	Erosion Control Sodding/Fertilizer/Mulch	

 **Submit Quotes To:** estimating@meyerci.com 

Project Description: Goal = 18.1% DBE

Work includes 65 EA grubbing; 12,500 LF remove curb & gutter, 29,000 SY remove bituminous pavement; 10,600 CY excavation – common; 10,300 CY aggregate base class 5; 7,200 ton bituminous pavement; 2,400 LF rc pipe sewer (12” -42”); 3,700 LF watermain ductile iron cl 52 (6”-12”); 430 LF const drainage structure (48”-84”); 100,000 SF concrete walk & concrete walk special; 3,850 SY concrete driveway pavement; 12,000 LF concrete curb & gutter design; 1 LS traffic control; 3 EA pedestrian crosswalk flasher system; 2 EA revise signal system.

- Anticipated Completion Date: November 8th, 2024

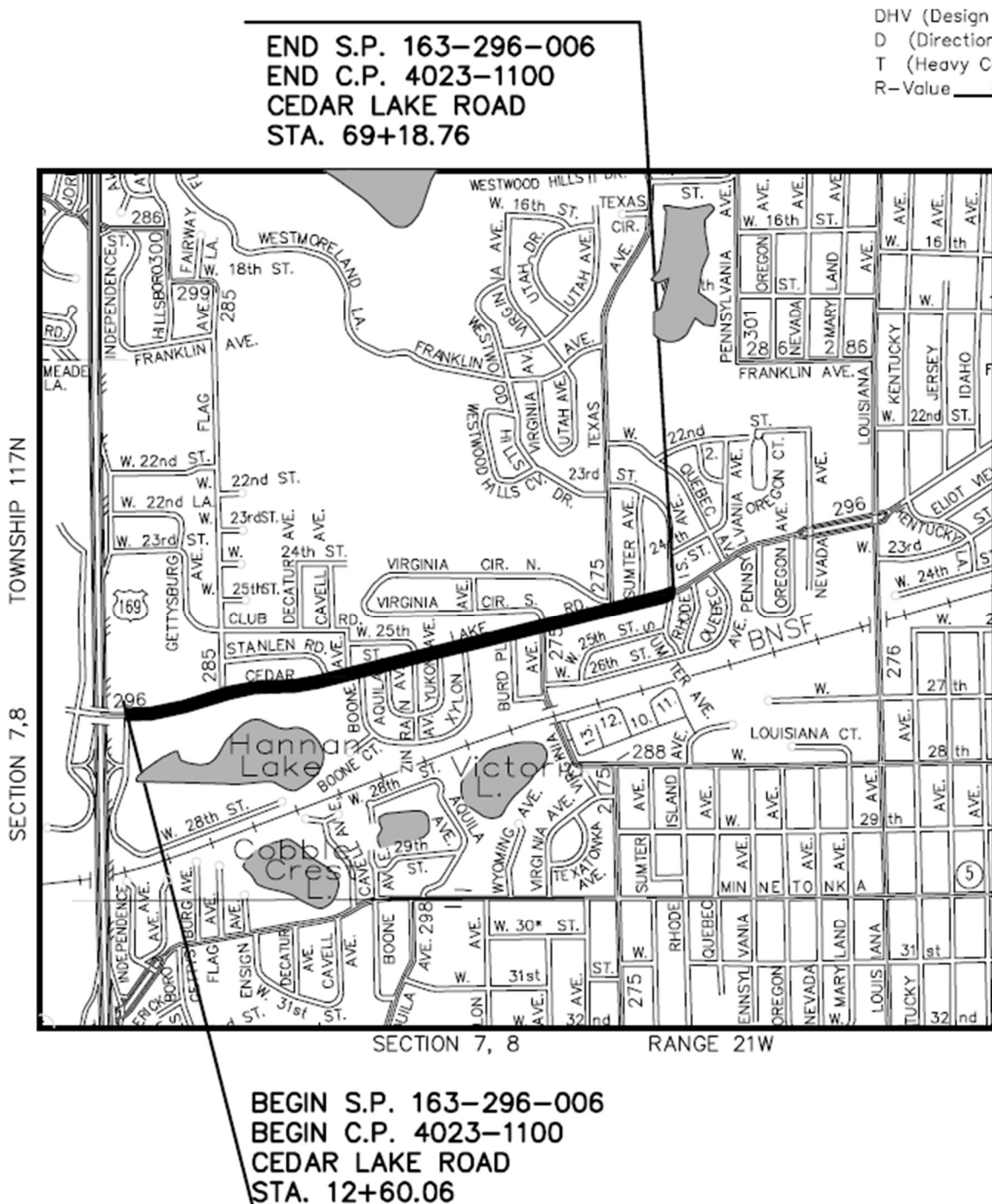
If you need assistance in obtaining bonding, lines of credit, insurance or would like assistance obtaining necessary equipment, supplies, materials, or any other related assistance, please contact Project Manager/Estimator, Scott Pelletier (763) 391-5990 or estimating@meyerci.com

Meyer Contracting is an Equal Opportunity/Affirmative Action Employer. Minorities, women, disabled, and veterans are encouraged to apply for available openings.



REQUEST FOR QUOTES

Project Location(s): Jordan Ave. to Rhode Island Ave.



If you need assistance in obtaining bonding, lines of credit, insurance or would like assistance obtaining necessary equipment, supplies, materials, or any other related assistance, please contact Project Manager/Estimator, Scott Pelletier at (763) 391-5990 or estimating@meyercci.com

Meyer Contracting is an Equal Opportunity/Affirmative Action Employer. Minorities, women, disabled, and veterans are encouraged to apply for available openings.

11000 93rd Ave N • Maple Grove, MN 55369
Phone: 763.391.5959 • Fax: 763.391.5960 www.meyercci.com



REQUEST FOR QUOTES

UNIT PRICING

Line	Item Number	Description	Units	Quantity
1	2011.610	UNDERGROUND UTILITY EXPLORATION	HOUR	30
2	2021.501	MOBILIZATION	LS	1
3	2031.502	FIELD OFFICE	EACH	1
4	2041.610	TRAINEES	HOUR	2,000
5	2101.502	GRUBBING	EACH	65
6	2102.503	PAVEMENT MARKING REMOVAL	L F	60
7	2104.502	REMOVE CONCRETE STEPS	EACH	12
8	2104.502	REMOVE PLANTER	EACH	2
9	2104.502	REMOVE MANHOLE OR CATCH BASIN	EACH	74
10	2104.502	REMOVE GATE VALVE AND BOX	EACH	24
11	2104.502	REMOVE CURB STOP AND BOX	EACH	27
12	2104.502	REMOVE HYDRANT	EACH	11
13	2104.502	REMOVE SIGN	EACH	43
14	2104.502	REMOVE HANDHOLE	EACH	1
15	2104.502	REMOVE LIGHT FOUNDATION	EACH	40
16	2104.502	REMOVE SIGN PANEL	EACH	27
17	2104.502	REMOVE BENCH	EACH	1
18	2104.502	SALVAGE BOULDER	EACH	8
19	2104.502	SALVAGE LIGHTING UNIT	EACH	40
20	2104.502	SALVAGE SERVICE CABINET	EACH	1
21	2104.502	SALVAGE SIGN	EACH	2
22	2104.502	SALVAGE SIGN PANEL	EACH	20
23	2104.502	SALVAGE MAIL BOX SUPPORT	EACH	6
24	2104.502	ABANDON MANHOLE	EACH	1
25	2104.503	SAWING CONCRETE PAVEMENT (FULL DEPTH)	L F	1,070
26	2104.503	SAWING BITUMINOUS PAVEMENT (FULL DEPTH)	L F	1,190
27	2104.503	REMOVE WATER MAIN	L F	3,784
28	2104.503	REMOVE SEWER PIPE (STORM)	L F	1,874
29	2104.503	REMOVE SEWER PIPE (SANITARY)	L F	87
30	2104.503	REMOVE CURB AND GUTTER	L F	12,400
31	2104.503	REMOVE RETAINING WALL	L F	180
32	2104.503	REMOVE WATER SERVICE PIPE	L F	1,070
33	2104.503	REMOVE DIRECT BURIED LIGHTING CABLE	L F	11,300
34	2104.503	SALVAGE FENCE	L F	340
35	2104.503	SALVAGE RETAINING WALL	L F	180
36	2104.504	REMOVE CONCRETE WALK	S Y	2,760
37	2104.504	REMOVE CONCRETE DRIVEWAY PAVEMENT	S Y	2,250
38	2104.504	REMOVE BITUMINOUS DRIVEWAY PAVEMENT	S Y	975
39	2104.504	REMOVE BITUMINOUS PAVEMENT	S Y	28,750
40	2104.602	SALVAGE SIGN SPECIAL	EACH	13

If you need assistance in obtaining bonding, lines of credit, insurance or would like assistance obtaining necessary equipment, supplies, materials, or any other related assistance, please contact Project Manager/Estimator, Scott Pelletier at (763) 391-5990 or estimating@meyercci.com

Meyer Contracting is an Equal Opportunity/Affirmative Action Employer. Minorities, women, disabled, and veterans are encouraged to apply for available openings.

11000 93rd Ave N • Maple Grove, MN 55369
Phone: 763.391.5959 • Fax: 763.391.5960 www.meyercci.com



REQUEST FOR QUOTES

UNIT PRICING

41	2104.603	ABANDON PIPE SEWER	LF	133
42	2106.507	EXCAVATION - COMMON (P)	C Y	10,595
43	2106.507	GRANULAR EMBANKMENT (CV)	C Y	100
44	2106.507	COMMON EMBANKMENT (CV) (P)	C Y	708
45	2106.601	DEWATERING	LS	1
46	2106.607	HAUL AND DISPOSE OF CONTAMINATED MATERIAL	C Y	1,200
47	2123.610	STREET SWEEPER (WITH PICKUP BROOM)	hour	150
48	2130.523	WATER	MGAL	150
49	2211.507	AGGREGATE BASE (CV) CLASS 5 (P)	C Y	10,290
50	2301.504	CONCRETE PAVEMENT 8.0"	S Y	1,080
51	2301.602	DRILL AND GROUT DOWEL BAR (EPOXY COATED)	EACH	4,050
52	2302.502	DRILL & GROUT REINF BAR (EPOXY COATED)	EACH	1,000
53	2331.603	JOINT ADHESIVE	LF	7,000
54	2360.509	TYPE SP 9.5 WEARING COURSE MIXTURE (2,C)	TON	160
55	2360.509	TYPE SP 9.5 WEARING COURSE MIXTURE (3,C)	TON	2,345
56	2360.509	TYPE SP 12.5 NON WEARING COURSE MIXTURE (3,B)	TON	2,345
57	2360.509	TYPE SP 12.5 WEARING COURSE MIXTURE (3,C)	TON	2,345
58	2411.603	INSTALL RETAINING WALL	LF	180
59	2411.607	CONCRETE STEPS	C Y	2
60	2411.618	MODULAR BLOCK RETAINING WALL	S F	1,175
61	2503.503	8" PVC PIPE SEWER	LF	20
62	2503.503	12" RC PIPE SEWER DESIGN 3006 CLASS V	LF	218
63	2503.503	15" RC PIPE SEWER DESIGN 3006 CLASS V	LF	1,993
64	2503.503	18" RC PIPE SEWER DESIGN 3006 CLASS V	LF	117
65	2503.503	36" RC PIPE SEWER DESIGN 3006 CLASS V	LF	83
66	2503.602	CONNECT TO EXISTING SANITARY SEWER	EACH	1
67	2503.602	CONNECT TO EXISTING STORM SEWER	EACH	48
68	2504.601	TEMPORARY WATER SERVICE	LS	1
69	2504.602	CONNECT TO EXISTING WATER MAIN	EACH	23
70	2504.602	HYDRANT	EACH	9
71	2504.602	ADJUST GATE VALVE AND BOX	EACH	14
72	2504.602	ADJUST WATER MANHOLES	EACH	3
73	2504.602	1" CORPORATION STOP	EACH	29
74	2504.602	6" GATE VALVE AND BOX	EACH	9
75	2504.602	12" GATE VALVE AND BOX	EACH	19
76	2504.602	ADJUST CURB STOP	EACH	11
77	2504.602	1" CURB STOP	EACH	29
78	2504.603	WATERMAIN INSULATION	LF	100
79	2504.603	1" TYPE K COPPER PIPE	LF	831
80	2504.603	1" TYPE K COPPER PIPE (SPECIAL)	LF	265
81	2504.603	6" WATERMAIN DUCTILE IRON CL 52	LF	102
82	2504.603	12" WATERMAIN DUCTILE IRON CL 52	LF	3,630
83	2504.608	DUCTILE IRON FITTINGS	LB	3,950
84	2506.502	CASTING ASSEMBLY	EACH	90

If you need assistance in obtaining bonding, lines of credit, insurance or would like assistance obtaining necessary equipment, supplies, materials, or any other related assistance, please contact Project Manager/Estimator, Scott Pelletier at (763) 391-5990 or estimating@meyerci.com

Meyer Contracting is an Equal Opportunity/Affirmative Action Employer. Minorities, women, disabled, and veterans are encouraged to apply for available openings.

11000 93rd Ave N • Maple Grove, MN 55369
Phone: 763.391.5959 • Fax: 763.391.5960 www.meyerci.com



REQUEST FOR QUOTES

UNIT PRICING

85	2506.503	CONSTRUCT DRAINAGE STRUCTURE DESIGN F	L F	13.6
86	2506.503	CONSTRUCT DRAINAGE STRUCTURE DESIGN SPECIAL	L F	157.4
87	2506.503	CONSTRUCT DRAINAGE STRUCTURE DESIGN 48-4020	L F	182.7
88	2506.503	CONSTRUCT DRAINAGE STRUCTURE DESIGN 60-4020	L F	84.2
89	2506.602	ADJUST FRAME AND RING CASTING (SPECIAL)	EACH	45
90	2511.602	PLACE BOULDER	EACH	8
91	2521.518	4" CONCRETE WALK	S F	9,100
92	2521.518	6" CONCRETE WALK	S F	32,000
93	2521.518	6" CONCRETE WALK SPECIAL	S F	54,300
94	2521.618	CONCRETE WALK	S F	7,350
95	2531.503	CONCRETE CURB AND GUTTER DESIGN SPECIAL	L F	4,640
96	2531.503	CONCRETE CURB AND GUTTER DESIGN B612	L F	540
97	2531.503	CONCRETE CURB AND GUTTER DESIGN B618	L F	5,550
98	2531.503	CONCRETE CURB DESIGN B6	L F	1,210
99	2531.504	6" CONCRETE DRIVEWAY PAVEMENT	S Y	2,450
100	2531.504	8" CONCRETE DRIVEWAY PAVEMENT	S Y	205
101	2531.603	CONCRETE CURB DESIGN V	L F	165
102	2531.604	8" CONCRETE DRIVEWAY PAVEMENT WITH INTEGRAL COLORING	S Y	95
103	2531.604	6" CONCRETE DRIVEWAY PAVEMENT WITH INTEGRAL COLORING	S Y	1,105
104	2531.618	TRUNCATED DOMES	S F	690
105	2533.503	PORTABLE PRECAST CONCRETE BARRIER DESIGN 8337	L F	180
106	2540.602	LANDSCAPE MONUMENT	EACH	10
107	2540.602	RELOCATE MAIL BOX SUPPORT	EACH	6
108	2545.502	LIGHTING UNIT TYPE SPECIAL	EACH	5
109	2545.502	LIGHT FOUNDATION DESIGN E MODIFIED	EACH	45
110	2545.502	SERVICE CABINET	EACH	1
111	2545.502	EQUIPMENT PAD	EACH	2
112	2545.502	HANDHOLE	EACH	1
113	2545.503	2" RIGID STEEL CONDUIT	L F	195
114	2545.503	2" NON-METALLIC CONDUIT	L F	12,570
115	2545.503	UNDERGROUND WIRE 1/C 2 AWG	L F	585
116	2545.503	UNDERGROUND WIRE 1/C 6 AWG	L F	48,485
117	2545.503	UNDERGROUND WIRE 1/C 14 AWG	L F	10,775
118	2545.602	INSTALL LIGHTING UNIT	EACH	40
119	2545.602	INSTALL SERVICE CABINET	EACH	1
120	2557.503	WIRE FENCE DESIGN 60V-9322	L F	165
121	2557.603	INSTALL FENCE	L F	340
122	2563.601	TRAFFIC CONTROL	LS	1
123	2563.601	ALTERNATE PEDESTRIAN ROUTE	LS	1
124	2564.502	INSTALL SIGN PANEL	EACH	13
125	2564.602	INSTALL SIGN	EACH	9
126	2564.602	INSTALL SIGN SPECIAL	EACH	15

If you need assistance in obtaining bonding, lines of credit, insurance or would like assistance obtaining necessary equipment, supplies, materials, or any other related assistance, please contact Project Manager/Estimator, Scott Pelletier at (763) 391-5990 or estimating@meyerci.com

Meyer Contracting is an Equal Opportunity/Affirmative Action Employer. Minorities, women, disabled, and veterans are encouraged to apply for available openings.

11000 93rd Ave N • Maple Grove, MN 55369
Phone: 763.391.5959 • Fax: 763.391.5960 www.meyerci.com



REQUEST FOR QUOTES

UNIT PRICING

127	2564.602	DELINEATOR / MARKER PANEL	EACH	6
128	2564.618	SIGN	S F	306
129	2564.618	SIGN PANEL	S F	99
130	2565.616	PEDESTRIAN CROSSWALK FLASHER SYSTEM	SYS	3
131	2565.616	REVISE SIGNAL SYSTEM A	SYS	1
132	2565.616	REVISE SIGNAL SYSTEM B	SYS	1
133	2571.502	DECIDUOUS TREE 2" CAL CONT	EACH	83
134	2571.502	DECIDUOUS SHRUB NO 2 CONT	EACH	28
135	2572.503	TEMPORARY FENCE	L F	8,300
136	2572.503	CLEAN ROOT CUTTING	L F	1,500
137	2573.501	STABILIZED CONSTRUCTION EXIT	LS	1
138	2573.501	EROSION CONTROL SUPERVISOR	LS	1
139	2573.502	STORM DRAIN INLET PROTECTION	EACH	87
140	2573.503	SILT FENCE, TYPE MS	L F	1,050
141	2573.503	SEDIMENT CONTROL LOG TYPE WOOD FIBER	L F	11,200
142	2574.507	COMMON TOPSOIL BORROW	C Y	1,520
143	2574.508	FERTILIZER TYPE 3	LB	670
144	2575.504	SODDING TYPE LAWN	S Y	9,110
145	2575.507	MULCH MATERIAL TYPE 6	C Y	45
146	2575.523	RAPID STABILIZATION METHOD 3	MGAL	12
147	2582.503	4" SOLID LINE MULTI-COMPONENT (WR)	L F	290
148	2582.503	12" SOLID LINE MULTI-COMPONENT (WR)	L F	145
149	2582.503	4" DOTTED LINE MULTI-COMPONENT (WR)	L F	326
150	2582.503	4" DOUBLE SOLID LINE MULTI-COMPONENT (WR)	L F	5,235
151	2582.518	PAVEMENT MESSAGE MULTI-COMPONENT GROUND IN (WR)	S F	109
152	2582.518	PAVEMENT MESSAGE PREFORM THERMOPLASTIC GROUND IN CONTRAST	S F	322
153	2582.518	CROSSWALK MULTI-COMPONENT GROUND IN (WR)	S F	1,395

If you need assistance in obtaining bonding, lines of credit, insurance or would like assistance obtaining necessary equipment, supplies, materials, or any other related assistance, please contact Project Manager/Estimator, Scott Pelletier at (763) 391-5990 or estimating@meyerci.com

Meyer Contracting is an Equal Opportunity/Affirmative Action Employer. Minorities, women, disabled, and veterans are encouraged to apply for available openings.

11000 93rd Ave N • Maple Grove, MN 55369
 Phone: 763.391.5959 • Fax: 763.391.5960 www.meyerci.com