



REQUEST FOR QUOTES

- ❖ **Project Name:** Minneapolis Event 2998 - Green Central SRTS Project
- ❖ **Project#:** S.P. 141-591-015, MN Proj. No. TA2724 (176)
- ❖ **Bid Date/Time:** April 24th, 2024 @ 2:00pm
- ❖ **Bid Docs:** <https://meyerci.sharefile.com/public/share/web-s17cef92c1c684ddf857171c19c68bb94>

Work Scopes Needed:

Surveying	Clearing & Grubbing	Traffic Control	Saw Cutting
Asphalt Paving	Concrete Flatwork	Landscape/Erosion Control	Pavement Marking/Striping
Electrical	Aggregates	PVC/DIP	RCP/Precast
Castings			

 **Submit Quotes To:** estimating@meyerci.com 

Project Description: **19 % DBE Goal**

The City of Minneapolis is issuing the Call for Bids for suppliers to provide all material, labor, equipment and incidentals necessary for Green Central SRTS for PW-Trans Maintenance & Repair, all in accordance with the provided specifications, event line items and all documents here within. This Project has a Disadvantaged Business Enterprises (DBE) goal of 19%. A directory of all certified DBEs in the state of Minnesota is available at the following link: <http://mnucp.metc.state.mn.us/Default.aspx>. The Minnesota Unified Certification Program (MnUCP) maintains this directory. It is the definitive source of information regarding the DBE certification status of firms in Minnesota.

- ❖ Anticipated Start Date: 7/15/2024
- ❖ Anticipated Substantial Completion Date: 12/31/2024

Class of Work:

Concrete walkway, Pavers/Permeable Pavers, Pedestrian Improvements, Paving (Trail Paving), Construction, walkway/Passage/Corridor

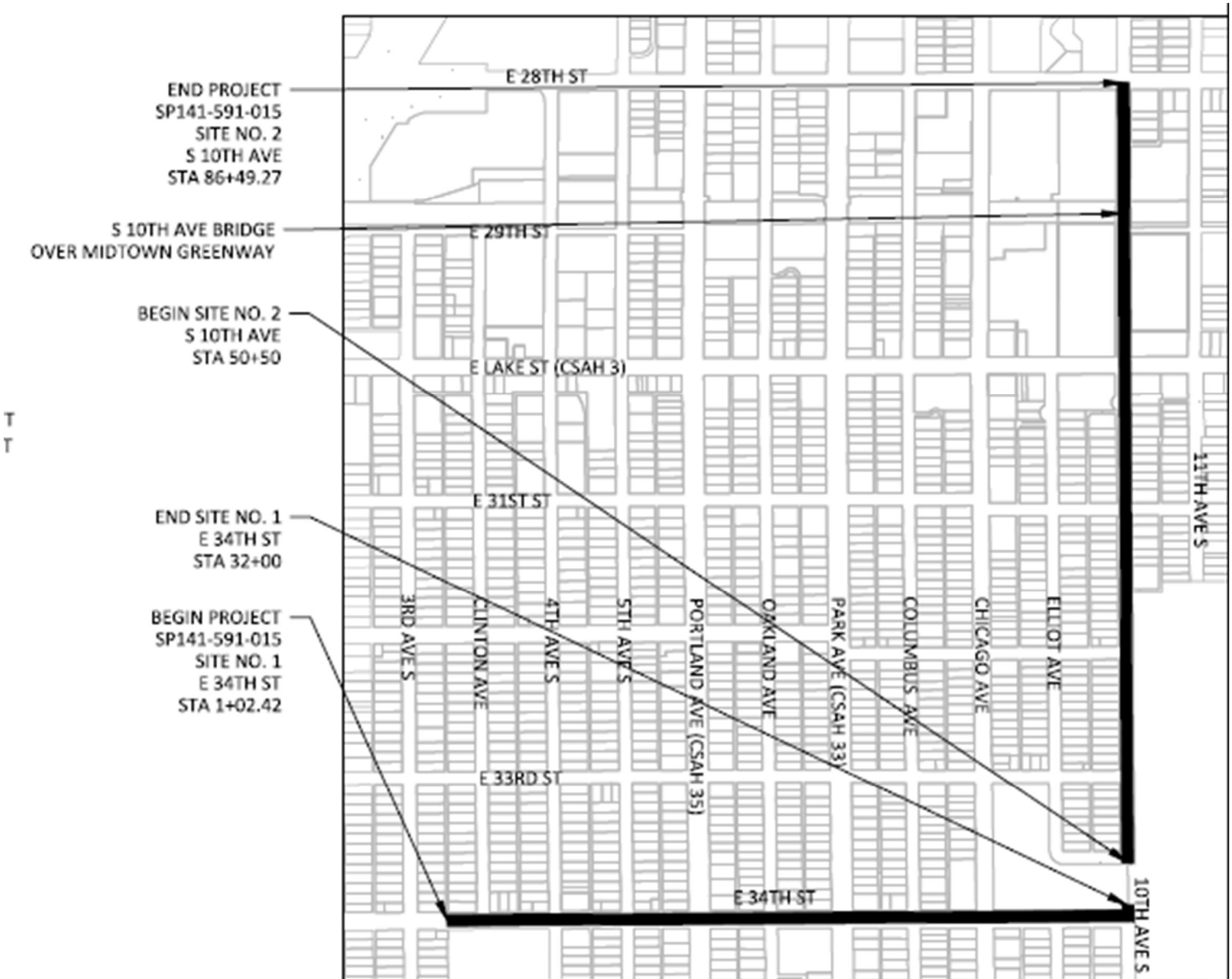
If you need assistance in obtaining bonding, lines of credit, insurance or would like assistance obtaining necessary equipment, supplies, materials, or any other related assistance, please contact Project Manager/Estimator, Josh Lindquist at (763) 391-5972 or email estimating@meyerci.com

Meyer Contracting is an Equal Opportunity/Affirmative Action Employer. Minorities, women, disabled, and veterans are encouraged to apply for available openings.



REQUEST FOR QUOTES

Project Location(s):



If you need assistance in obtaining bonding, lines of credit, insurance or would like assistance obtaining necessary equipment, supplies, materials, or any other related assistance, please contact Project Manager/Estimator, Josh Lindquist at (763) 391-5972 or email estimating@meyercci.com

Meyer Contracting is an Equal Opportunity/Affirmative Action Employer. Minorities, women, disabled, and veterans are encouraged to apply for available openings.

11000 93rd Ave N • Maple Grove, MN 55369
Phone: 763.391.5959 • Fax: 763.391.5960 www.meyercci.com



REQUEST FOR QUOTES

UNIT PRICING

Event 2998 – Green Central SRTS Project

MNDOT Spec No.	Item Description	Approx. Qty.	Unit
2011.601	CONSTRUCTION SURVEYING	1	LUMP SUM
2021.501	MOBILIZATION	1	LUMP SUM
2101.502	CLEARING	10	EACH
2101.502	GRUBBING	10	EACH
2102.503	PAVEMENT MARKING REMOVAL	128	LIN FT
2102.518	PAVEMENT MARKING REMOVAL	215	SQ FT
2104.502	REMOVE GUARD POST	1	EACH
2104.502	REMOVE CATCH BASIN	11	EACH
2104.502	REMOVE HYDRANT	2	EACH
2104.502	REMOVE WATER MANHOLE	1	EACH
2104.502	REMOVE SIGN	72	EACH
2104.502	SALVAGE SIGN	14	EACH
2104.503	SAWING CONCRETE/BITUMINOUS PAVEMENT (FULL DEPTH)	2560	LIN FT
2104.503	REMOVE SEWER PIPE (STORM)	291	LIN FT
2104.503	SALVAGE (& REINSTALL) FENCE	192	LIN FT
2104.503	REMOVE CURB & GUTTER	1585	LIN FT
2104.503	REMOVE CURB & GUTTER (B660)	460	LIN FT
2104.504	REMOVE ROADWAY PAVEMENT	3579	SQ YD
2104.518	REMOVE CONCRETE WALK	10872	SQ FT
2104.504	REMOVE CONCRETE DRIVEWAY PAVEMENT	9	SQ YD
2106.507	COMMON EXCAVATION (P)	588	CU YD
2211.507	AGGREGATE BASE CLASS 5 (CV)	727	CU YD
2232.504	MILL BITUMINOUS SURFACE (3")	329	SQ YD
2357.506	BITUMINOUS MATERIAL FOR TACK COAT	193	GAL
2360.509	TYPE SP 12.5 NON WEAR COURSE MIX (4,L)	445	TON
2360.509	TYPE SP 12.5 WEAR COURSE MIX (5,L)	628	TON
2503.503	12" PVC PIPE SEWER	435	LIN FT
2504.602	ADJUST VALVE BOX	3	EACH
2504.602	WATER UTILITY HOLE	2	EACH
2504.602	CONNECT TO EXISTING WATER MAIN	3	EACH
2504.602	INSTALL HYDRANT	2	EACH
2504.602	6" GATE VALVE & BOX	2	EACH
2504.603	6" WATER MAIN DUCTILE IRON CL 52	16	LIN FT
2504.608	WATERMAIN FITTINGS	50	LBS
2506.502	CASTING ASSEMBLY	49	EACH
2506.502	ADJUST FRAME AND RING CASTING	49	EACH

If you need assistance in obtaining bonding, lines of credit, insurance or would like assistance obtaining necessary equipment, supplies, materials, or any other related assistance, please contact Project Manager/Estimator, Josh Lindquist at (763) 391-5972 or email estimating@meyercci.com

Meyer Contracting is an Equal Opportunity/Affirmative Action Employer. Minorities, women, disabled, and veterans are encouraged to apply for available openings.

11000 93rd Ave N • Maple Grove, MN 55369
Phone: 763.391.5959 • Fax: 763.391.5960 www.meyercci.com



REQUEST FOR QUOTES

UNIT PRICING

Event 2998 – Green Central SRTS Project

2506.502	CONSTRUCT DRAINAGE STRUCTURE DESIGN N	13	EACH
2506.503	CONSTRUCT DRAINAGE STRUCTURE DESIGN 48-4020	9.2	LIN FT
2507.503	RECONSTRUCT DRAINAGE STRUCTURE	5	LIN FT
2503.602	CONNECT TO EXISTING DRAINAGE STRUCTURE	9	EACH
2503.602	CONNECT TO EXISTING STORM SEWER	1	EACH
2514.602	CONCRETE SLOPE PAVING DESIGN SPECIAL 1	1	EACH
2521.518	4" CONCRETE WALK	8592	SQ FT
2521.518	6" CONCRETE WALK	4065	SQ FT
2531.503	CONCRETE CURB & GUTTER DESIGN B612	285	LIN FT
2531.503	CONCRETE CURB & GUTTER DESIGN B624	2131	LIN FT
2531.503	CONCRETE CURB DESIGN V6	227	LIN FT
2531.503	CONCRETE MEDIAN (5" HEIGHT)	3113	LIN FT
2531.504	4" CONCRETE WALK SPECIAL - BLACK ICE	1266	SQ FT
2531.504	6" CONCRETE WALK SPECIAL - BLACK ICE	1339	SQ FT
2531.504	6" CONCRETE DRIVEWAY PAVEMENT	9	SQ YD
2531.504	CONCRETE PAVEMENT 8"	129	SQ YD
2531.504	CONCRETE PAVEMENT 8" - BLACK ICE	24	SQ YD
2531.618	TRUNCATED DOMES	749	SQ FT
2531.618	TACTILE GUIDE STRIP	41	SQ FT
2563.601	TRAFFIC CONTROL	1	LUMP SUM
2564.502	INSTALL SIGN PANEL	14	EACH
2564.502	DELINEATOR - TYPE SPECIAL	89	EACH
2564.602	DELINEATOR / MARKER SIGN	10	EACH
2564.518	SIGN	520	SQ FT
2564.602	SIGN COLLAR	16	EACH
2564.602	SIGN FOUNDATION	89	EACH
2565.501	TRAFFIC CONTROL INTERCONNECT	1	SYSTEM
2565.516	TRAFFIC CONTROL SIGNAL SYSTEM A	1	SYSTEM
2565.616	TRAFFIC CONTROL SIGNAL SYSTEM B	1	SYSTEM
2573.502	STORM DRAIN INLET PROTECTION	76	EACH
2574.507	BIORETENTION MEDIA	210	CU YD
2575.501	SEEDING	0.35	ACRE
2575.502	SEED MIXTURE 260	200	POUND
2571.502	TREE PLANTING HOLE PREPARATION	10	EACH
2575.504	ROLLED EROSION PREVENTION CATEGORY 15	100	SQ YD
2575.604	SODDING, TYPE SPECIAL	570	SQ YD

If you need assistance in obtaining bonding, lines of credit, insurance or would like assistance obtaining necessary equipment, supplies, materials, or any other related assistance, please contact Project Manager/Estimator, Josh Lindquist at (763) 391-5972 or email estimating@meyerci.com

Meyer Contracting is an Equal Opportunity/Affirmative Action Employer. Minorities, women, disabled, and veterans are encouraged to apply for available openings.

11000 93rd Ave N • Maple Grove, MN 55369
Phone: 763.391.5959 • Fax: 763.391.5960 www.meyerci.com



REQUEST FOR QUOTES

UNIT PRICING

Event 2998 – Green Central SRTS Project

2582.503	4" SOLID LINE MULTI-COMPONENT GROUND IN	4308	LIN FT
2582.503	6" SOLID LINE MULTI-COMPONENT GROUND IN	6893	LIN FT
2582.503	8" SOLID LINE MULTI-COMPONENT GROUND IN	882	LIN FT
2582.503	4" BROKEN LINE MULTI-COMPONENT GROUND IN	474	LIN FT
2582.503	4" SOLID LINE MULTI-COMPONENT GROUND IN (WR)	533	LIN FT
2582.503	6" SOLID LINE MULTI-COMPONENT GROUND IN (WR)	336	LIN FT
2582.503	4" DOTTED LINE MULTI-COMPONENT GROUND IN (WR)	846	LIN FT
2582.503	4" DOUBLE SOLID LINE MULTI-COMPONENT GROUND IN (WR)	516	LIN FT
2582.503	24" SOLID LINE PREFORM THERMO GROUND IN ESR	180	LIN FT
2582.518	PAVEMENT MESSAGE PREFORM THERMOPLASTIC GROUND IN	874	SQ FT
2582.518	CROSSWALK PREFORM THERMOPLASTIC GROUND IN ENHAN	1234	SQ FT
2582.618	PAVEMENT MARKING SPECIAL 2-WAY BIKE CONFLICT MARKIN	500	SQ FT
2582.618	PAVEMENT MARKING SPECIAL 2	98	SQ FT
2582.618	PAVEMENT MARKING SPECIAL 3	130	SQ FT
2582.618	PAVEMENT MARKING SPECIAL 4	147	SQ FT

If you need assistance in obtaining bonding, lines of credit, insurance or would like assistance obtaining necessary equipment, supplies, materials, or any other related assistance, please contact Project Manager/Estimator, Josh Lindquist at (763) 391-5972 or email estimating@meyer-ci.com

Meyer Contracting is an Equal Opportunity/Affirmative Action Employer. Minorities, women, disabled, and veterans are encouraged to apply for available openings.