



## REQUEST FOR QUOTES

- ❖ **Project Name:** Mahtomedi Warner Ave Improvements SRTS
- ❖ **Project#:** State Proj. #: 219-591-001/MN Proj. #: TA8224 (168)
- ❖ **Bid Date/Time:** May 1<sup>st</sup>, 2024 @ 10:00am
- ❖ **Bid Docs:** <https://meyerci.sharefile.com/public/share/web-sbf948ac63c434d089bcf4d665ecd15b2>

### Work Scopes Needed:

Saw Cutting	Geotextile	Aggregates	Asphalt Paving
Truncated Domes	Concrete Flatwork	Rebar	Mailbox
Landscaping	DI/PVC	Erosion Control	Signage
Traffic Control	Pavement Marking/Striping	Casting	Curb & Gutter

 **Submit Quotes To:** [estimating@meyerci.com](mailto:estimating@meyerci.com) 

### Project Description: **10.6% DBE Goal**

A directory of all certified DBEs in the state of Minnesota is available at the following link: <http://mnucp.metc.state.mn.us/Default.aspx>. The Minnesota Unified Certification Program (MnUCP) maintains this directory. It is the definitive source of information regarding the DBE certification status of firms in Minnesota. Safe Routes to School project. The Project includes the furnishing of all labor and materials for the construction complete in-place, of the following approximate quantities:

- 266 S Y Remove Bituminous/Concrete Driveway Pavement
- 1,830 S Y Remove Bituminous Pavement
- 783 C Y Excavation - Common (P)
- 324 C Y Common Embankment (CV)
- 430 C Y Aggregate Base (CV) Class 5
- 104 TON Type SP 9.5 Wearing Course Mix (2,B)
- 137 TON Type SP 12.5 Non Wear Course Mix (2,C)
- 984 L F 12" RC Pipe Sewer Design 3006 Class V
- 49.6 L F Construct Drainage Structure Design 48-4020
- 8,930 S F 4" Concrete Walk
- 1,299 S F Concrete Curb Ramp Walk
- 2,100 L F Concrete Curb and Gutter Design B618
- 139 S Y 6" Concrete Driveway Pavement
- 202 S F Truncated Domes

### Class of Work:

Aggregates, pedestrian improvements, sidewalks/curbs/gutter, concrete walkway, concrete pavement, sitework/excavating & grading, grade & surface, curbs, pavement removals, walkway/passage/corridor, paving (asphalt or concrete)

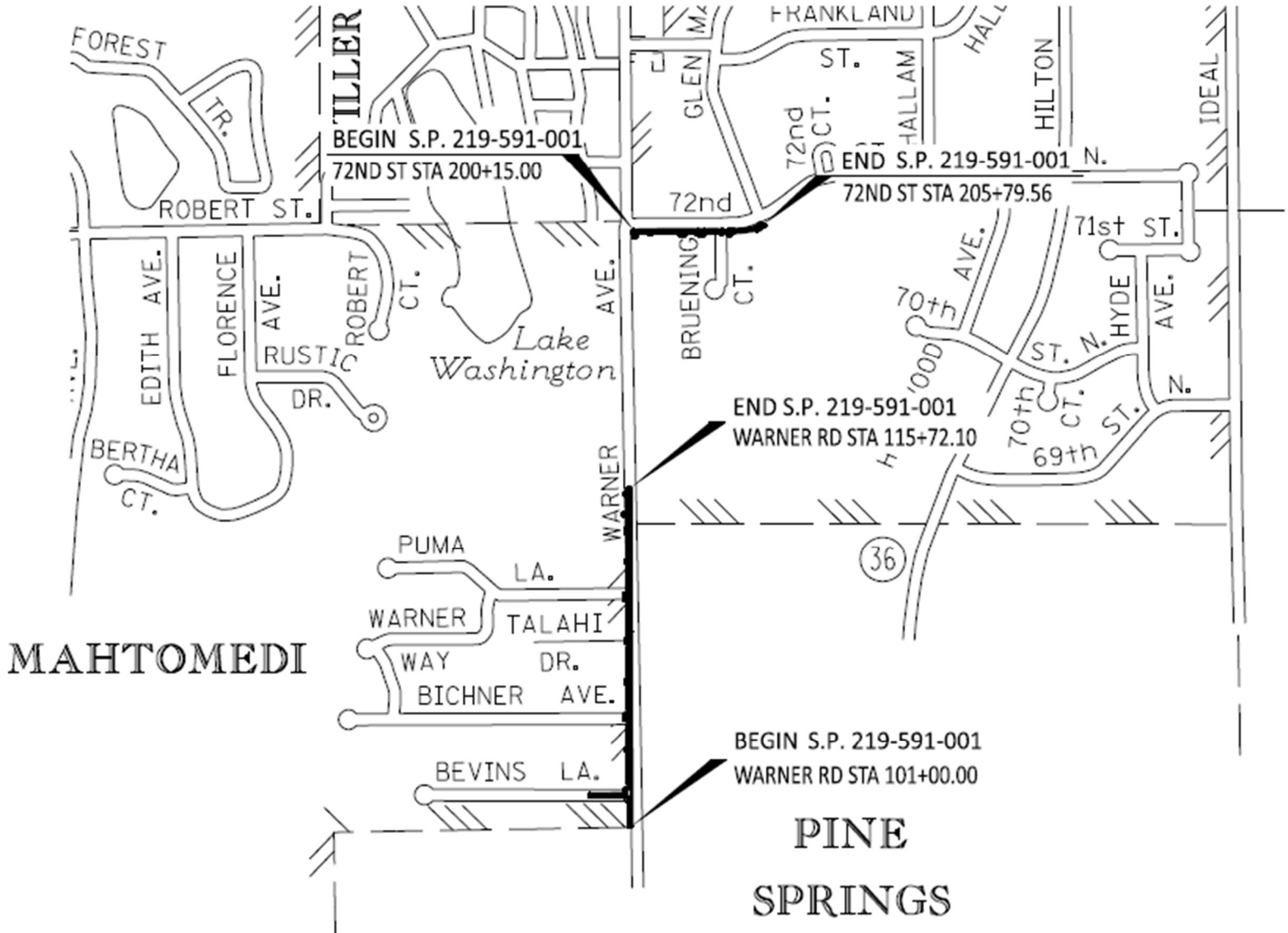
If you need assistance in obtaining bonding, lines of credit, insurance or would like assistance obtaining necessary equipment, supplies, materials, or any other related assistance, please contact Project Manager/Estimator, Sam Petefish at (763) 406-9523 or [estimating@meyerci.com](mailto:estimating@meyerci.com)

*Meyer Contracting is an Equal Opportunity/Affirmative Action Employer. Minorities, women, disabled, and veterans are encouraged to apply for available openings.*



## REQUEST FOR QUOTES

### Project Location(s):





## REQUEST FOR QUOTES

### UNIT PRICING

1	2021.501 MOBILIZATION	LS
2	2104.502 REMOVE SIGN	EACH
3	2104.502 REMOVE MAIL BOX SUPPORT	EACH
4	2104.502 SALVAGE BOULDER	EACH
5	2104.502 SALVAGE SIGN PANEL	EACH
6	2104.503 SAWING CONCRETE PAVEMENT (FULL DEPTH)	LF
7	2104.503 SAWING BIT PAVEMENT (FULL DEPTH)	LF
8	2104.503 REMOVE CURB & GUTTER	LF
9	2104.504 REMOVE CONCRETE DRIVEWAY PAVEMENT	SY
10	2104.504 REMOVE BITUMINOUS DRIVEWAY PAVEMENT	SY
11	2104.504 REMOVE BITUMINOUS PAVEMENT	SY
12	2104.518 REMOVE BITUMINOUS WALK	SF
13	2104.518 REMOVE CONCRETE WALK	SF
14	2104.602 SALVAGE SIGN SPECIAL	EACH
15	2104.602 SALVAGE SIGN PANEL SPECIAL	EACH
16	2104.604 SALVAGE LANDSCAPE ROCK	SY
17	2106.507 EXCAVATION - COMMON (P)	CY
18	2106.507 SELECT GRANULAR EMBANKMENT (CV) (P)	CY
19	2106.507 COMMON EMBANKMENT (CV) (P)	CY
20	2123.61 SKID LOADER	HOUR
21	2211.507 AGGREGATE BASE (CV) CLASS 5	CY
22	2231.509 BITUMINOUS PATCHING MIXTURE	TON
23	2360.504 TYPE SP 9.5 WEAR CRS MIX (2,B) 4.0" THICK	SY
24	2360.509 TYPE SP 9.5 WEARING COURSE MIX (2,B)	TON
25	2360.509 TYPE SP 12.5 NON WEAR COURSE MIX (2,C)	TON
26	2501.502 12" RC PIPE APRON	EACH
27	2503.503 12" RC PIPE SEWER DES 3006 CL V	LF
28	2504.602 ADJUST HYDRANT & GATE VALVE	EACH
29	2504.602 ADJUST GATE VALVE	EACH
30	2506.502 CASTING ASSEMBLY	EACH

If you need assistance in obtaining bonding, lines of credit, insurance or would like assistance obtaining necessary equipment, supplies, materials, or any other related assistance, please contact Project Manager/Estimator, Josh Lindquist at (763) 391 or [estimating@meyerci.com](mailto:estimating@meyerci.com)

*Meyer Contracting is an Equal Opportunity/Affirmative Action Employer. Minorities, women, disabled, and veterans are encouraged to apply for available openings.*

11000 93rd Ave N • Maple Grove, MN 55369  
Phone: 763.391.5959 • Fax: 763.391.5960 [www.meyerci.com](http://www.meyerci.com)





## REQUEST FOR QUOTES

### UNIT PRICING

31	2506.502 ADJUST FRAME & RING CASTING	EACH
32	2506.503 CONST DRAINAGE STRUCTURE DES 48-4020	L F
33	2506.602 CONST DRAINAGE STRUCTURE DESIGN SPECIAL	EACH
34	2511.504 GEOTEXTILE FILTER TYPE 4	S Y
35	2511.507 RANDOM RIPRAP CLASS III	C Y
36	2511.507 GRANULAR FILTER	C Y
37	2511.602 PLACE BOULDER	EACH
38	2521.518 4" CONCRETE WALK	S F
39	2521.602 DRILL & GROUT REINF BAR (EPOXY COATED)	EACH
40	2521.618 CONCRETE CURB RAMP WALK	S F
41	2531.503 CONCRETE CURB & GUTTER DESIGN B618	L F
42	2531.504 6" CONCRETE DRIVEWAY PAVEMENT	S Y
43	2531.618 TRUNCATED DOMES	S F
44	2540.602 MAIL BOX SUPPORT	EACH
45	2540.604 INSTALL LANDSCAPE ROCK	S Y
46	2554.502 GUIDE POST TYPE B	EACH
47	2563.601 TRAFFIC CONTROL	LS
48	2563.61 FLAGGER	HOURL
49	2564.502 INSTALL SIGN PANEL	EACH
50	2564.602 INSTALL SIGN SPECIAL	EACH
51	2564.602 INSTALL SIGN PANEL SPECIAL	EACH
52	2564.618 SIGN	S F
53	2572.51 PRUNE TREES	HOURL
54	2573.502 STORM DRAIN INLET PROTECTION	EACH
55	2573.503 SEDIMENT CONTROL LOG TYPE WOOD FIBER	L F
56	2574.508 FERTILIZER TYPE 3	LB
57	2575.504 RAPID STABILIZATION METHOD 4	S Y
58	2575.505 SEEDING	ACRE
59	2575.508 SEED MIXTURE 25-151	LB
60	2575.508 HYDRAULIC STABILIZED FIBER MATRIX	LB
61	2582.503 4" SOLID LINE MULTI COMP GR IN	L F
62	2582.503 4" DBLE SOLID LINE MULTI COMP GR IN	L F
63	2582.518 PAVT MSSG MULTI COMP GR IN	S F
64	2582.518 CROSSWALK MULTI COMP GR IN	S F

If you need assistance in obtaining bonding, lines of credit, insurance or would like assistance obtaining necessary equipment, supplies, materials, or any other related assistance, please contact Project Manager/Estimator, Josh Lindquist at (763) 391 or [estimating@meyer-ci.com](mailto:estimating@meyer-ci.com)

*Meyer Contracting is an Equal Opportunity/Affirmative Action Employer. Minorities, women, disabled, and veterans are encouraged to apply for available openings.*

11000 93rd Ave N • Maple Grove, MN 55369  
Phone: 763.391.5959 • Fax: 763.391.5960 [www.meyer-ci.com](http://www.meyer-ci.com)