

**AND THIS IS WHY WOMEN  
LIVE LONGER THAN MEN**



more awesome pictures at [THEMETA.PICTURE.COM](http://THEMETA.PICTURE.COM)  
GUGGLE.COM







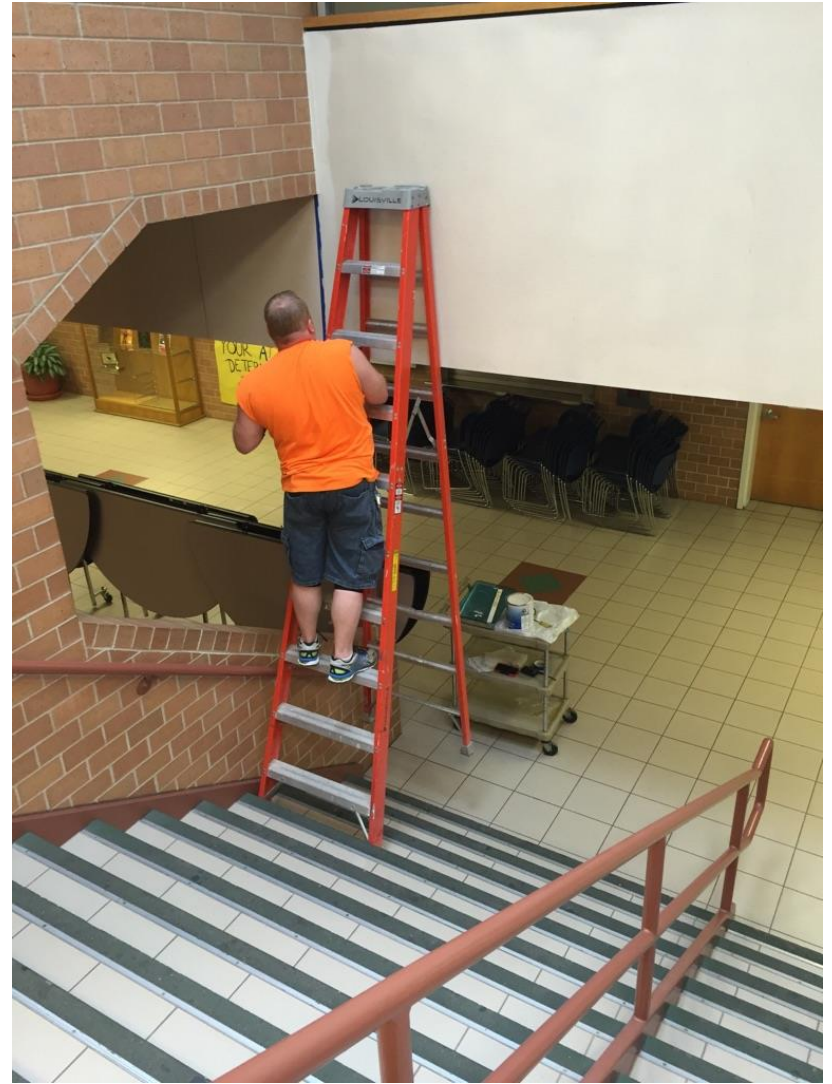




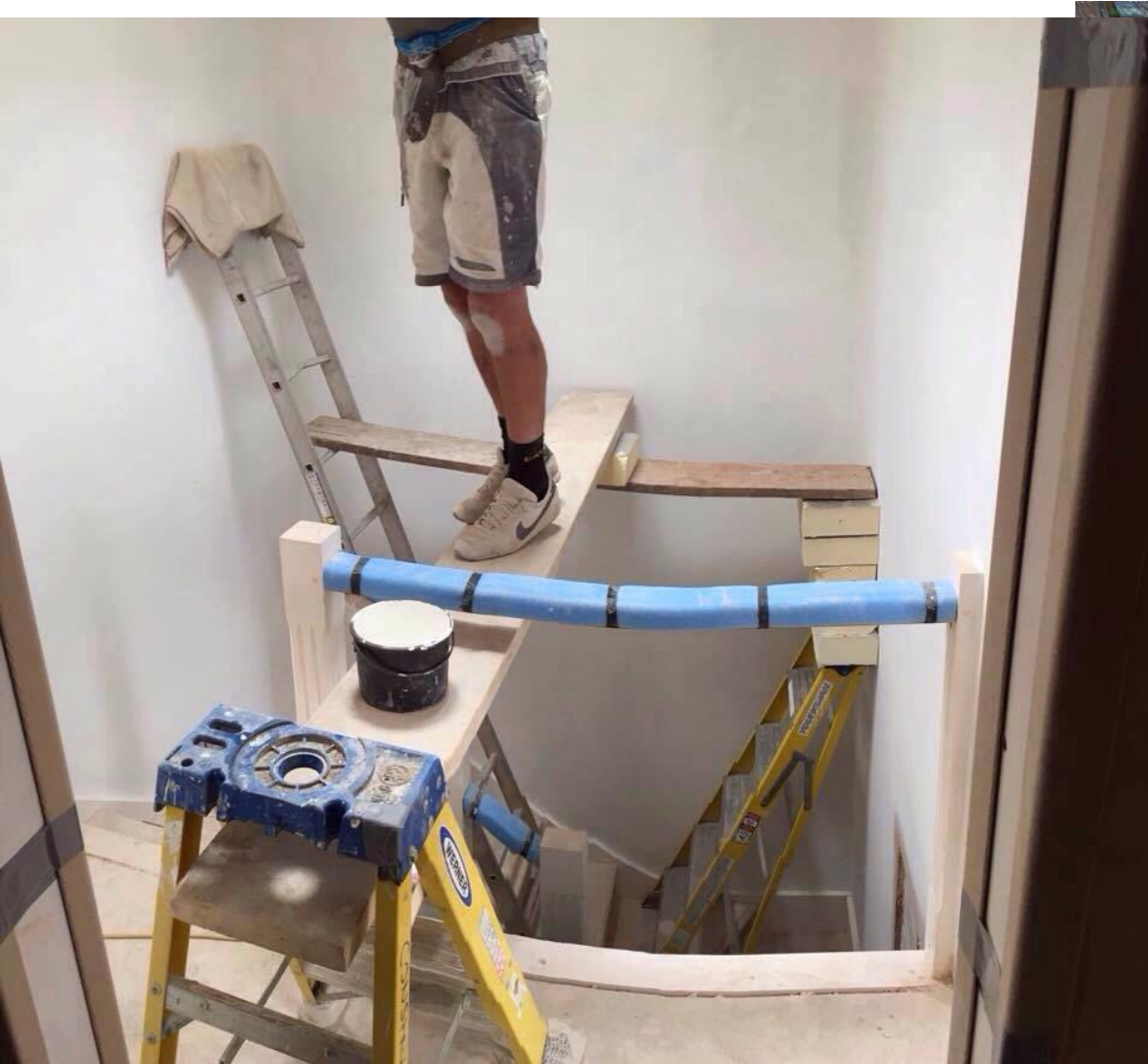
















LadderSafety.org







# LADDER SAFETY TRAINING

Wing Enterprises

**Welcome:** David Francis

**Modules Completed:** #

**Average Score:** #

Manager's Tools:

[View Training](#)[Add Training User](#)[View All Training User Data](#)[Download User Data](#)

## Add Training User

New User's First Name:

New User's Last Name:

New User's Email Address:

Confirm User's Email:

New User's Position:

[Add New Training User](#)

### *NOTE TO MANAGER:*

Each new user added will receive a registration email with their password.

The user's training data and scores will then be available to you by pressing the "View All Training User Data" button under the Manager's Tools.

To download your training user's data, press the "Download User Data" button found in the Manager's Tools.



NATIONAL  
**LADDER SAFETY**  
MONTH

MARCH  
2018



[www.laddersafetymonth.com](http://www.laddersafetymonth.com)









**How much \$ to change a light bulb?**





# The Hidden cost of Accidents and Injuries

## Direct Costs



\$38,000 – US Average

Insured and budgeted for:

- Medical
- Rehab expenses
- Workers comp
- Hospital

WCF reported \$62 Billion in non-fatal claims last year.

# The Hidden cost of Accidents and Injuries

## Direct Costs



\$38,000 – US Average

Insured and budgeted for:

- Medical
- Rehab expenses
- Workers comp
- Hospital

WCF reported \$62 Billion in non-fatal claims last year.

## Indirect Costs

**3-10 X**


Direct Costs X 3  
\$114,000

Uninsured and paid with Profit \$:

- Production loss
- Replacement training
- Legal issues
- Investigation
- Loss of morale

OSHA estimates a total cost to business at \$198 Billion.

# The Hidden cost of Accidents and Injuries

Direct Costs		Indirect Costs	3-10 X	Revenue Required	\$
<p>\$38,000 – US Average</p> <p>Insured and budgeted for:</p> <ul style="list-style-type: none"> <li>• Medical</li> <li>• Rehab expenses</li> <li>• Workers comp</li> <li>• Hospital</li> </ul> <p>WCF reported \$62 Billion in non-fatal claims last year.</p>		<p>Direct Costs X 3 \$114,000</p> <p>Uninsured and paid with Profit \$:</p> <ul style="list-style-type: none"> <li>• Production loss</li> <li>• Replacement training</li> <li>• Legal issues</li> <li>• Investigation</li> <li>• Loss of morale</li> </ul> <p>OSHA estimates a total cost to business at \$198 Billion.</p>		<p>Operating at a 10% Profit Margin you would need <b>\$1,140,000</b> of work to cover indirect costs</p> <p>OSHA’s “Safety Pays” Program calculates total costs of accidents and the work needed to cover expenses. <a href="http://www.osha.gov/dcsp/safetypays">www.osha.gov/dcsp/safetypays</a></p> <p>Ladder related accident costs are 2-3 times higher than the average.</p>	



# **#1 – Choose The Right Ladder for the Job.**





**Use  
A  
Ladder**

**AND THIS IS WHY WOMEN  
LIVE LONGER THAN MEN**



more awesome pictures at [THEMETAPICTURE.COM](http://THEMETAPICTURE.COM)  
**GOOGLE LIFT**



# Material & Rating



**Wood**



**Aluminum**



**Fiberglass**



Light Duty  
Household  
use  
Type III



Medium Duty  
Painter &  
Handyman  
Type II



Heavy  
Duty  
Industrial  
Type I



Extra Heavy  
Duty  
Industrial  
Type IA



Special Duty  
Rugged  
Professional  
Type IAA

















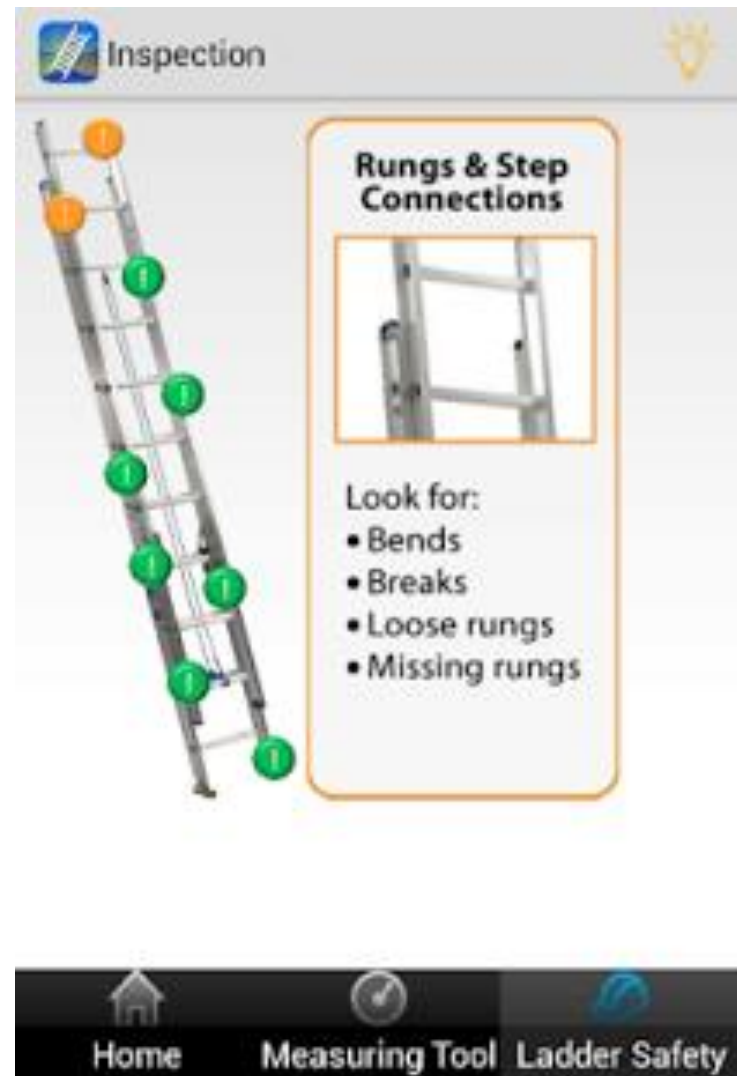




**INSPECT IT HOW OFTEN?**

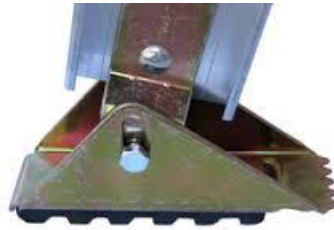






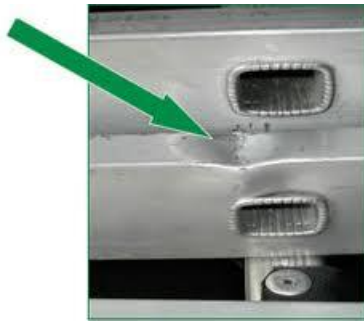
# From the Ground Up

Aluminum Swivel Type Ladder Shoes



**Feet on your ladder are like the tires on your car.**

# Side Rails





# Fiber Bloom

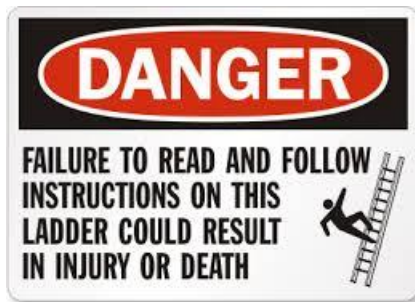


# Steps & Rungs





# Labels





# Nuts & Bolts

All bolts and rivets are in place and securely tighten

Any auxiliary equipment is securely attached, not excessively worn and functions properly.

Hardware and fittings are securely attached and working properly

Ropes aren't frayed or badly worn

Moveable parts operate freely without binding or excessive play.

In the event a ladder is discarded, it must be destroyed in such a manner as to render it useless. Another person must not be afforded the opportunity to use a ladder that has been deemed unsafe.

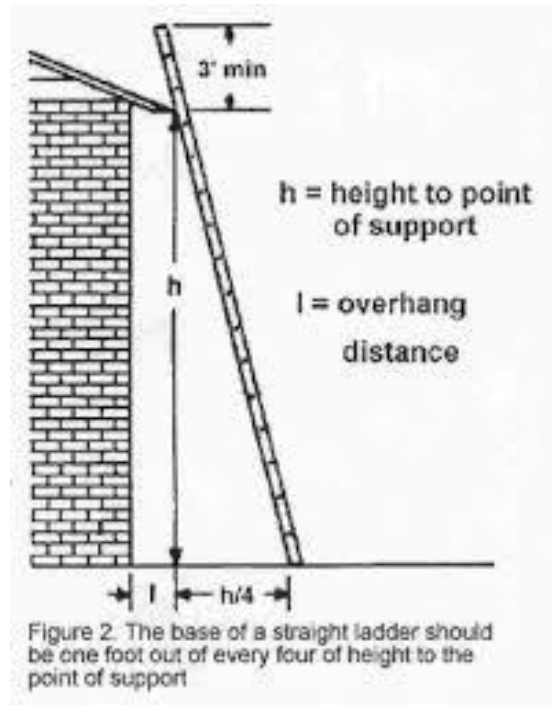


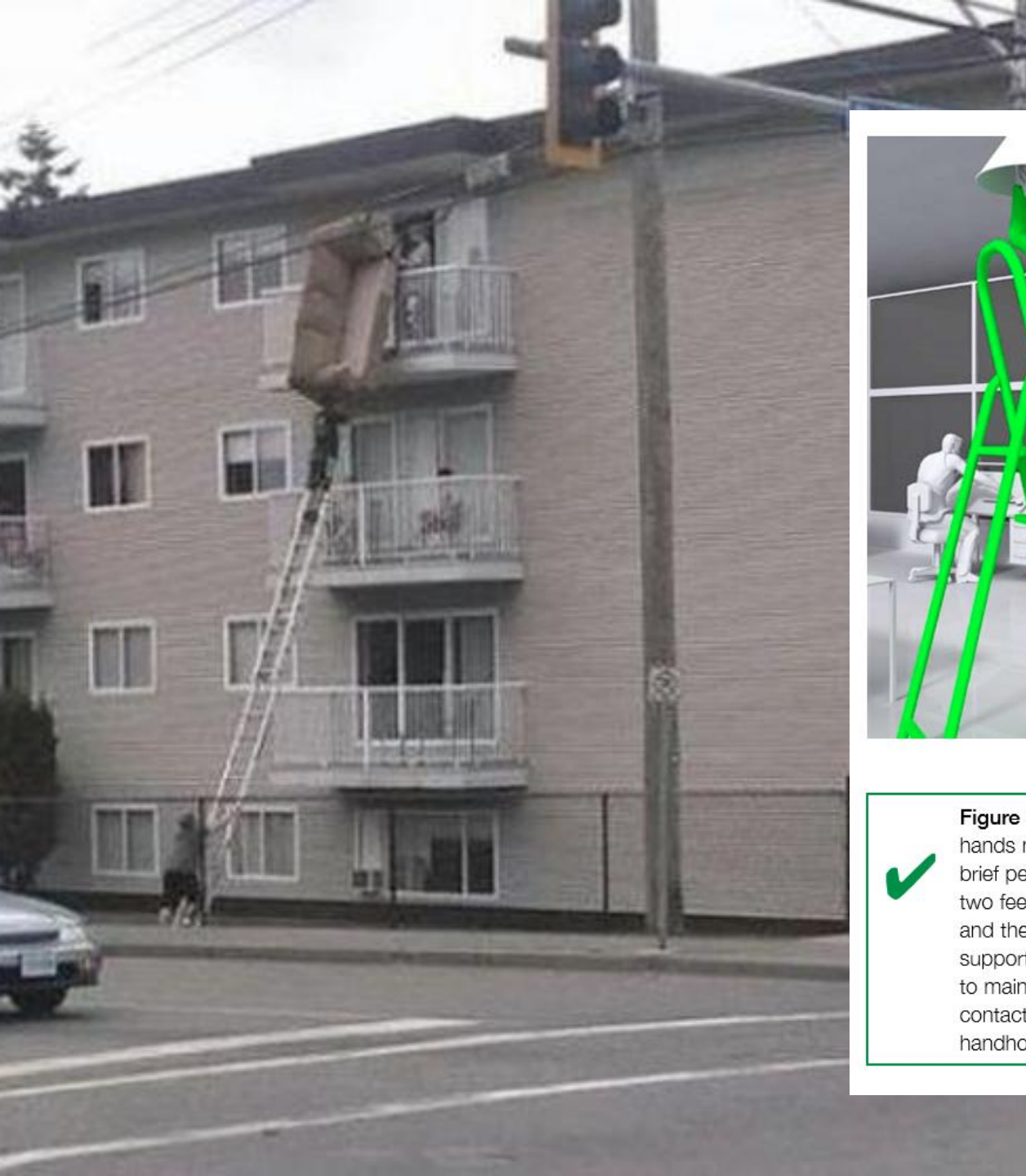






# 4 to 1





**Figure 5** Example where two hands need to be free for a brief period for light work. Keep two feet on the same step and the body (knees or chest) supported by the stepladder to maintain three points of contact. Make sure a safe handhold is available









**35 - People Permanently Disabled Today**

---

**12,000 - Families**





# GRANDPA'S LADDER





# Hierarchy of Control





# Car/Ladder design comparison

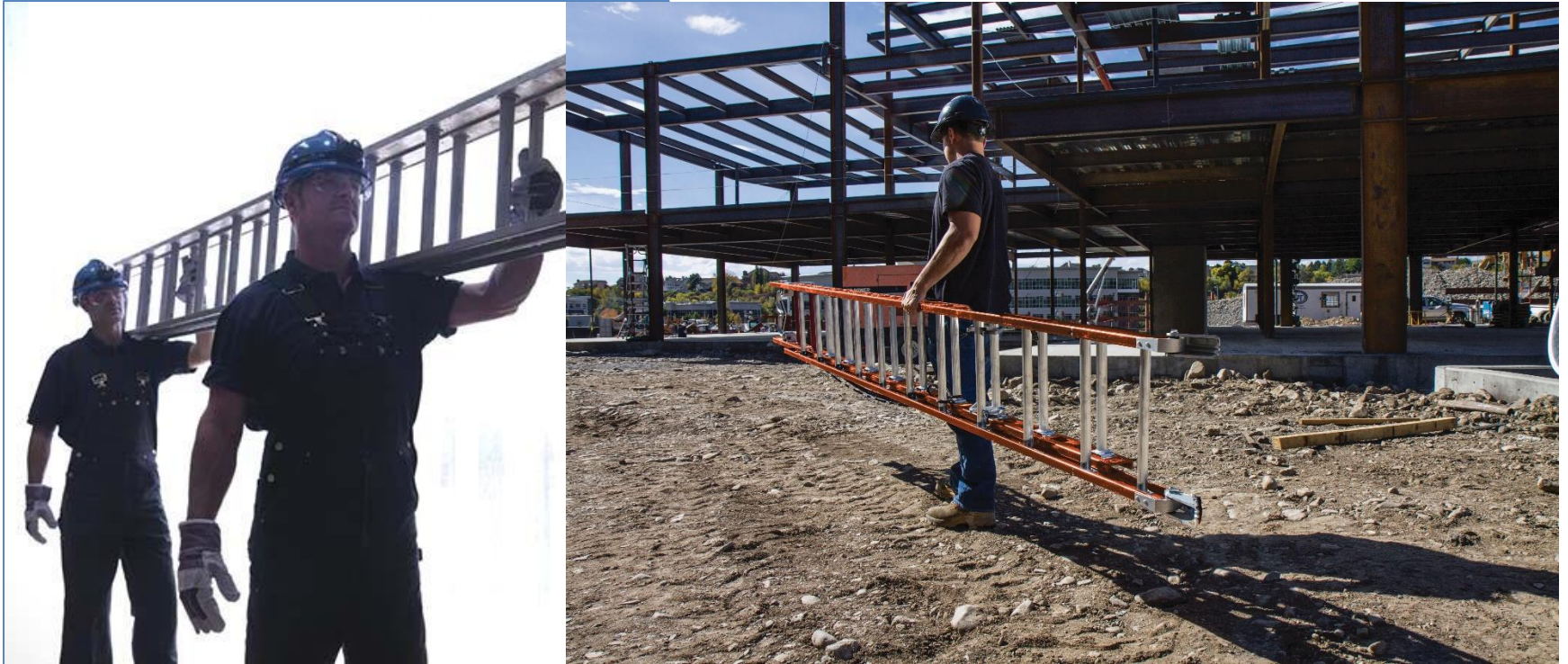


**vs.**

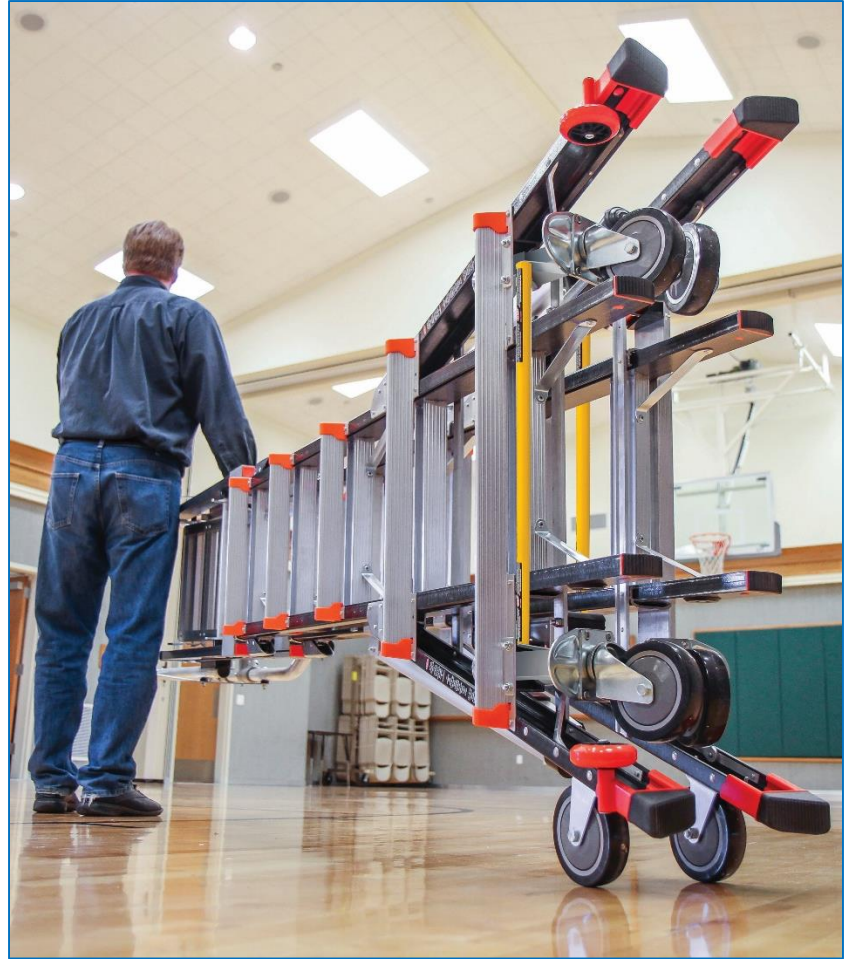
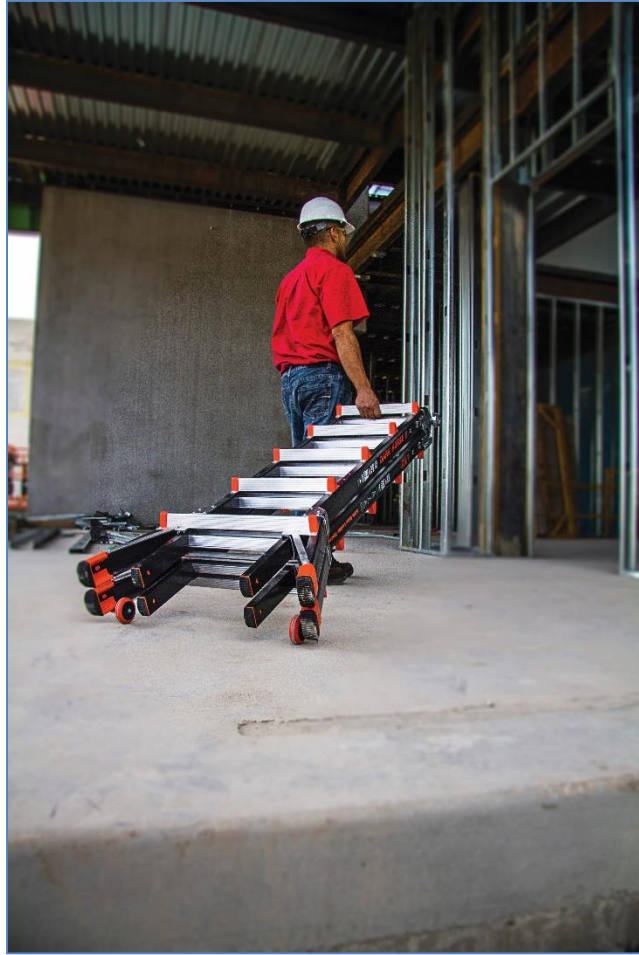




# Problem #1







# Problem #2



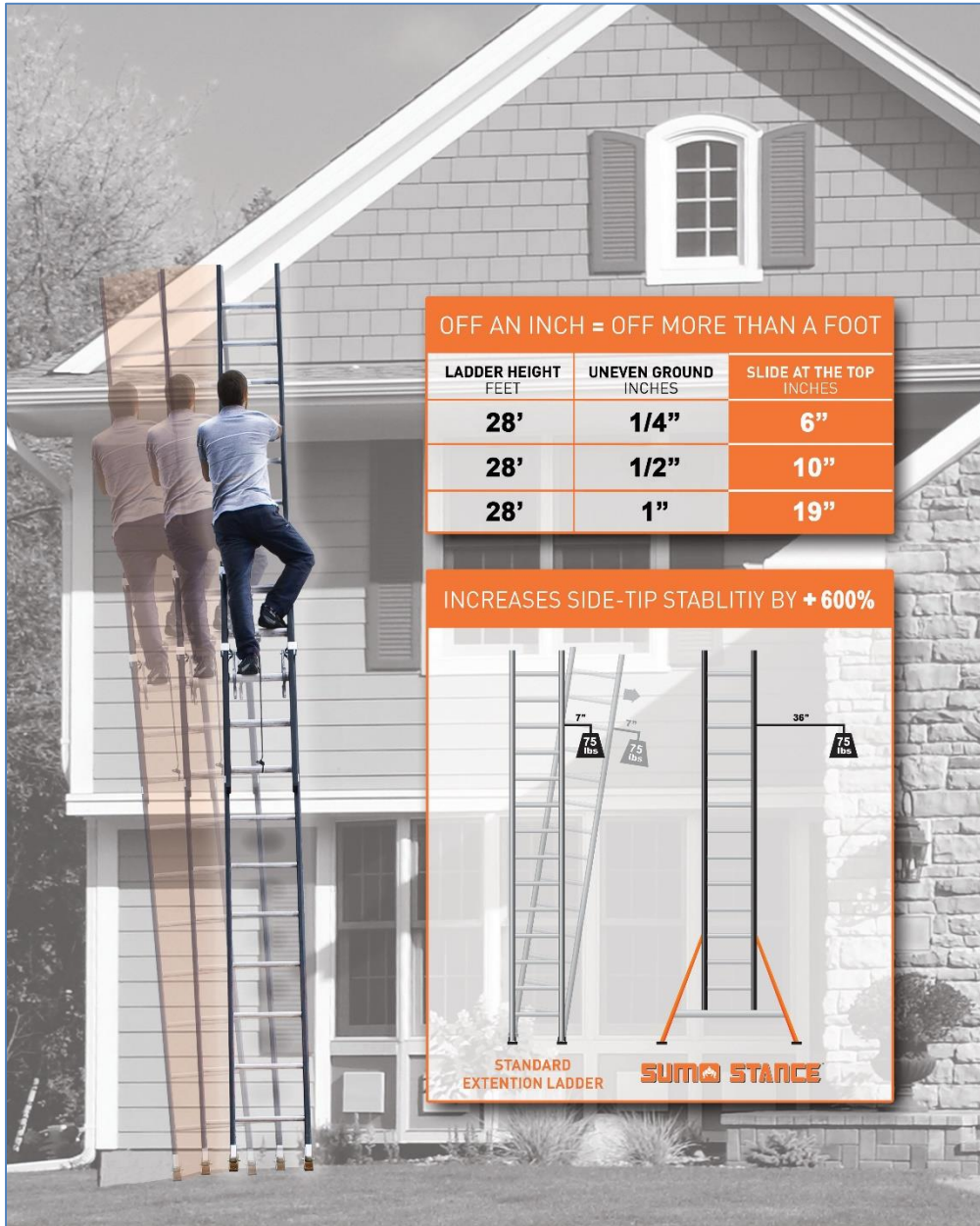
Field trial with ladder  
missing top step





# Problem #3






OFF AN INCH = OFF MORE THAN A FOOT

LADDER HEIGHT FEET	UNEVEN GROUND INCHES	SLIDE AT THE TOP INCHES
28'	1/4"	6"
28'	1/2"	10"
28'	1"	19"

INCREASES SIDE-TIP STABILITY BY +600%



STANDARD  
EXTENSION LADDER

SUMOSTANCE



**LEVEL LADDER FAIL**

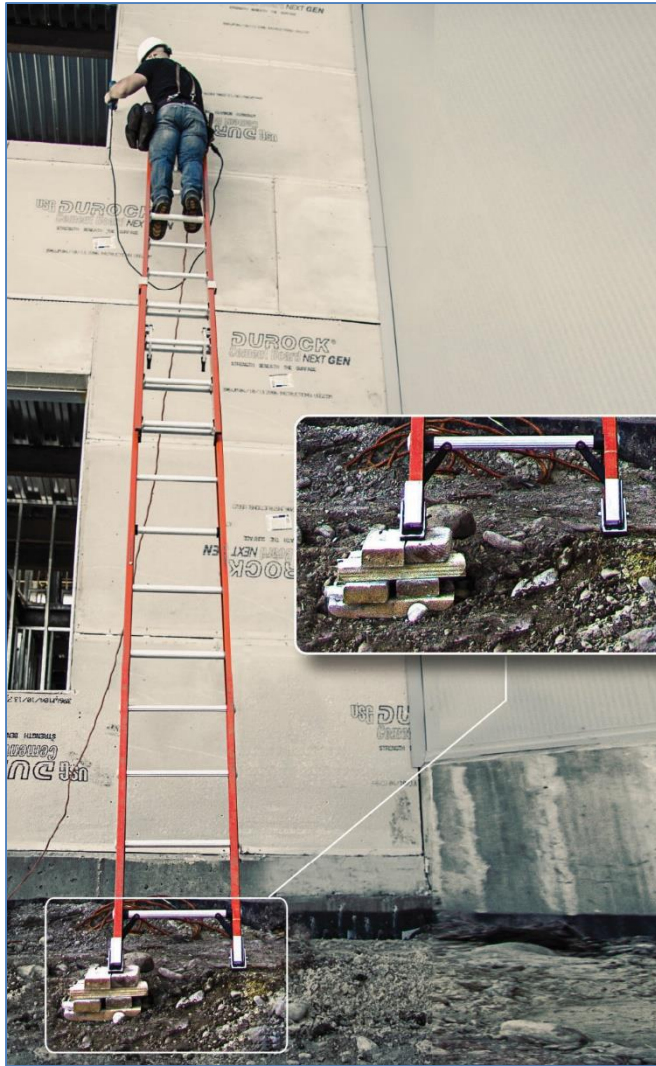




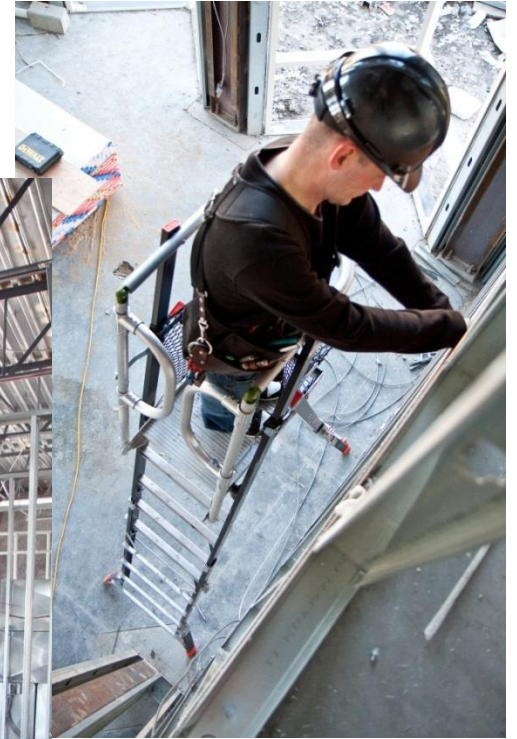












**PREVENTING INJURIES,  
SAVING LIVES™**

