

2019

AGC & MnDOT Grading & Base Awards

Local Grading

CSAH 16 (Washington Avenue) Carlton County

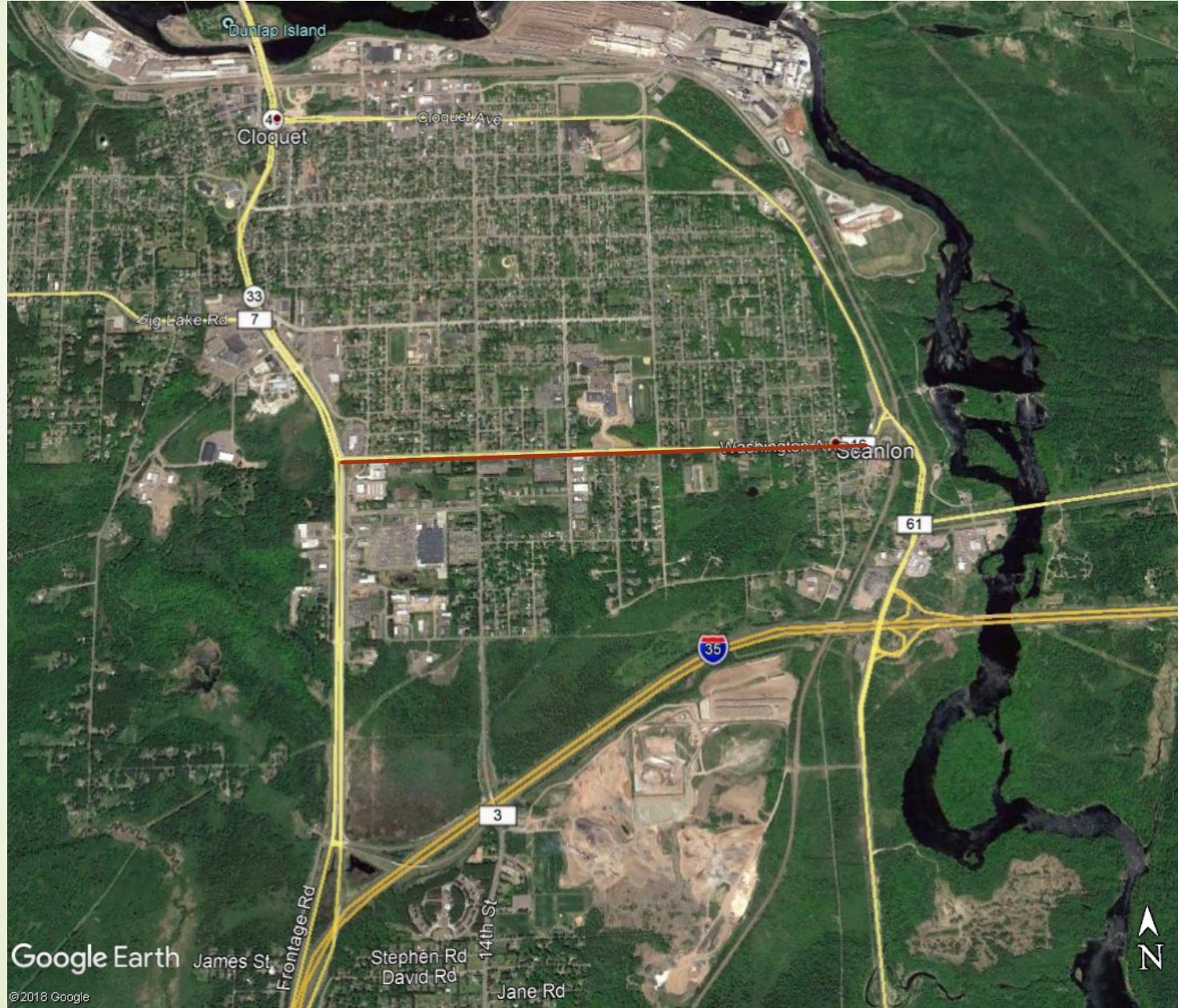
- Agency: Carlton County
- Prime Contractor: Northland Constructors

Summary

- From Cloquet to Scanlon
- Project length: 1.6 Miles
- Concrete Pipe
- 65 K SF Concrete Walk

CR 16 (Washington Avenue): Cloquet to Scanlon

5



Background

6

- Washington Avenue urban road from Cloquet to Scanlon.
- Many businesses, residences, parks, a church, a daycare, and a new school.
- Scoped as M/OL: 44' wide street with 12' thru lanes and 10' parking lanes in each direction.
- Responding to public for pedestrian safety, business and residential accesses, and crash data; Carlton County decided to reconstruct.
- The end result was a 10 foot multi-use trail on the South side of the road for the safety of pedestrian and bikers. Road was narrowed to 33' to have an 11' center left turn lane with two 11' thru lanes.
- Landscaped boulevards with green space to slow traffic.

Highlights

7

1. Project completed on schedule
2. Environmental Compliance
 - Permits needed were Cloquet, DNR, MPCA, & Army Corps.
 - The Contractor was very proactive in SWPPP inspections, following BMP's.
3. Material Compliance
 - All grading gradations and densities met requirements.
4. Complexity
 - Washington Avenue three entities: Cloquet, Scanlon, & Carlton County.
 - Both cities had water and sanitary sewer work.
 - Carlton County had storm sewer catch basins and leads that were replaced.
 - Road had to stay open to allow access
5. Design Compliance
 - The Contractor was able to construct the project in compliance with the plans and special provisions. When issues occurred, addressed quickly.

Let's Get to Work



All Dug up and ready for Pipe

9



Ready to Carry Traffic - east

10



Another View - west



Functioning again - west

12

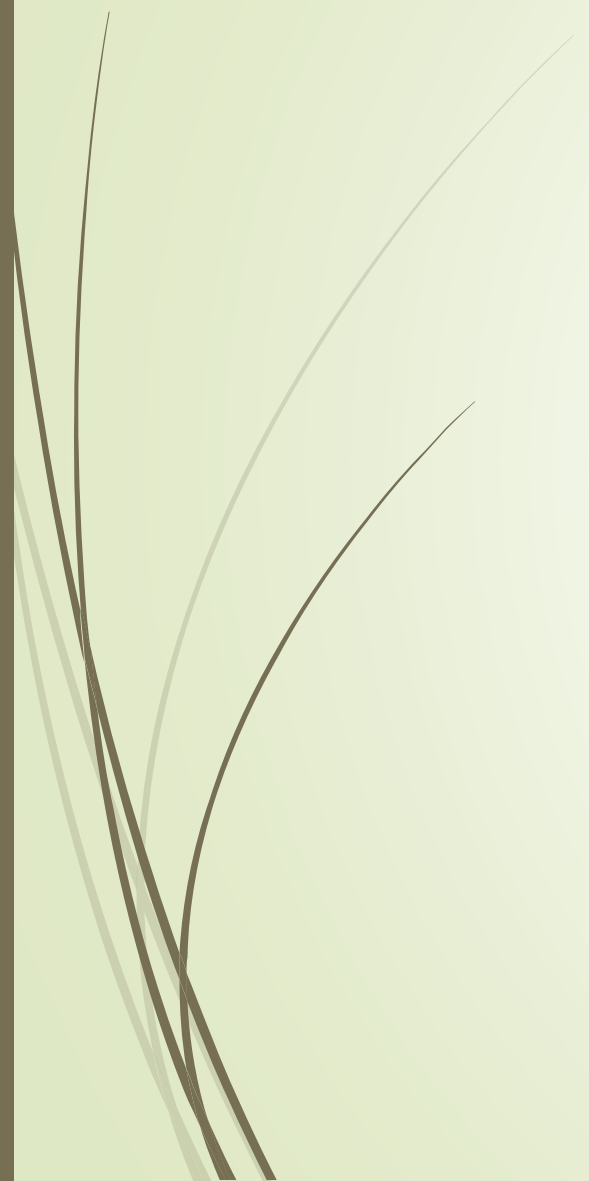


Safer and Smoother for the Pedestrians - east



Complete: Nice Job! - east





Category: State Reclamation Cold In Place Recycling

TH 14: Bituminous over Concrete

- MnDOT District 8
- Prime Contractor: Duininck Inc.
- Sub Contractor (CIR): Midstate Reclamation
- Sub Contractor (Grading): Towne and Country

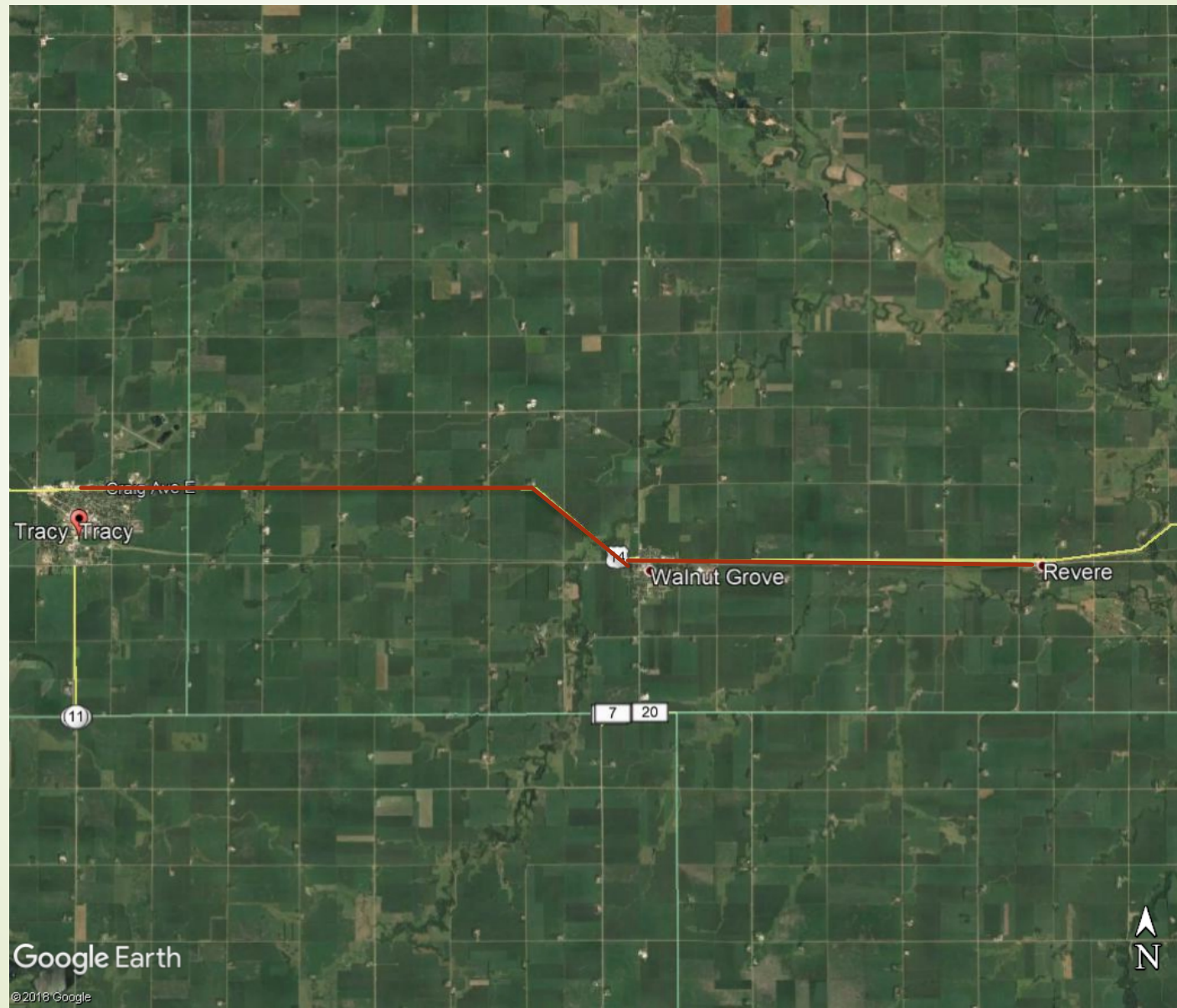
Project Details

SP's 4202-27 & 6401-37

- Lyon & Redwood County
- Tracy to Revere
- \$5.1 million
- 12.7 miles
- 12 rural intersections, 4 urban intersections
- 1 Bridge
- 1 turn lane extension
- 200,000 SY of CIR (BOC)
 - Emulsion with 0.5% Cement

Tracy to Revere

19



Contract Achievements: Partnering on Schedule

- The District & Contractor partnered moved project times.
- Because of:
 - Cold wet weather & event in Walnut Grove
 - Good quality was achieved,
 - While Laura Ingalls Wilder event went well.

NPDS

- ➡ Site restoration, ditch cleaning, & general drainage work areas.
- ➡ Sites stabilized in a timely manner and seeded as required.
- ➡ A substantial change order was added using FEMA funds to repair a slide area near the Tracy Golf Course.
- ➡ All permit requirements met: avoiding wetland & public waters impacts, & removed material sloughed into channel.

Material Quality

- Materials met requirements with only minor deviations

Detours



Culvert Crossings

24



More Culvert and Catch Basin Work



Riprapped Ditch

Where Several Slope Failures Had Occurred



Some Grading, Spot HMA, & Bridge Work

27



It rained once in a while



But helped with concrete cure



CIR: EE with 0.5% cement



Getting her done



31

31



Daily Tack Record

Driver: Stuard Folger --- Go Home Safe Today --- M T W T H F Date: 6-10

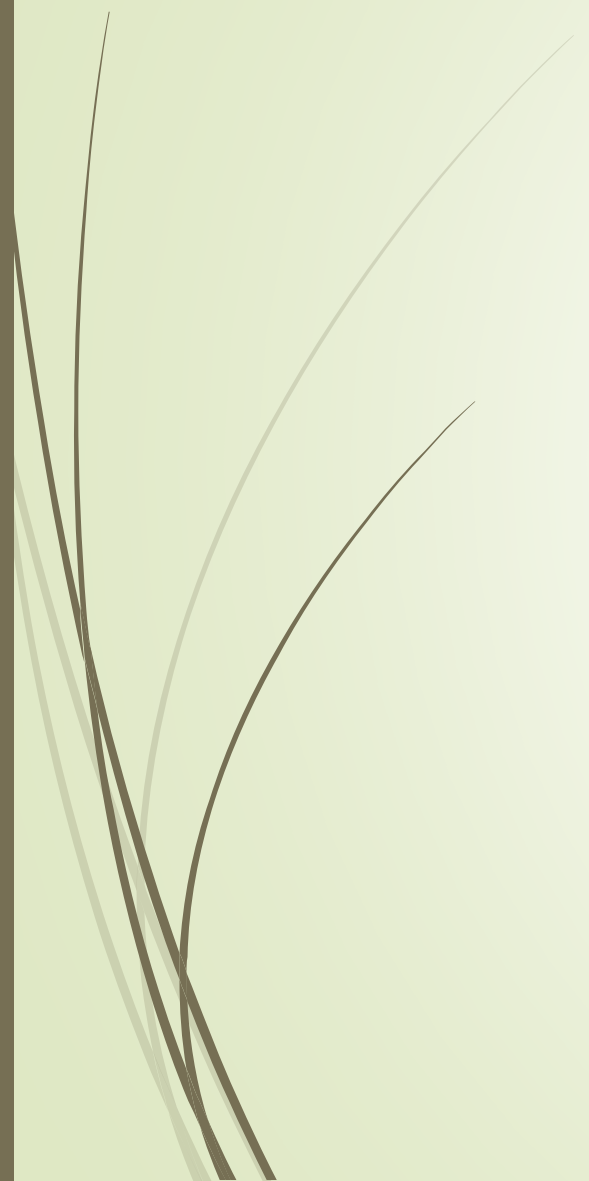
Unit No: T0317

Job No:	Job Description:	Gallons Shot:	Temp:	Source:
193010	CIR	800	175	

Signature: Stuard Folger

DUININCK





State Grading

TH 71

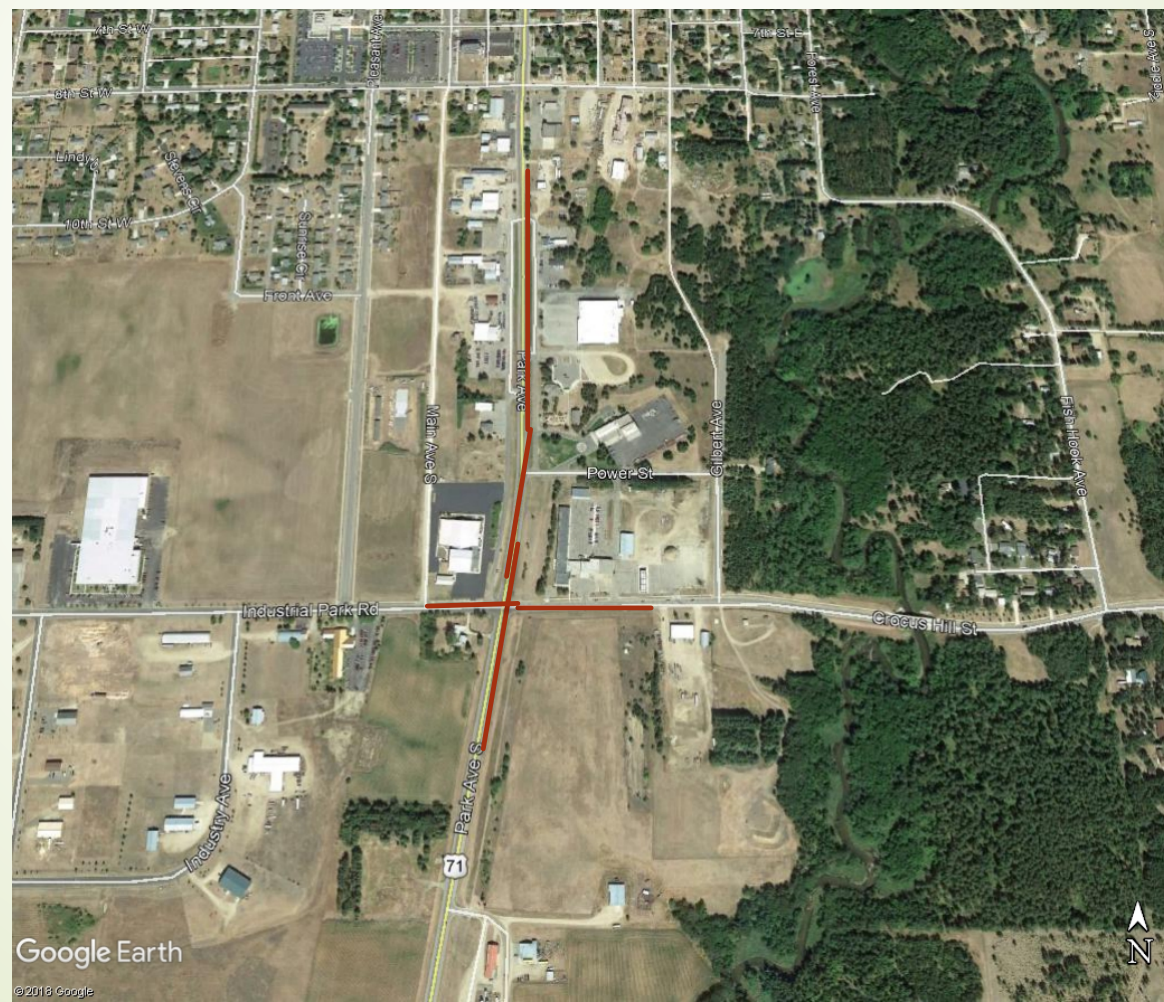
- MnDOT – District 2 - Bemidji
- Prime Contractor: Gladen Construction

Summary

36

- SP 2904-15, 029-615-006, and 029-653-002
- TH 71, Industrial Avenue/Crocus Hill Street
- Total Length approximately One Mile
- \$4.3 Million
- 40 k CY Excavation
- 20 k CY Embankment Material
- 10 k CY Base
- 6,500 Feet Concrete and 500 Feet Drainage Structures

Park Rapids TH 71 and One Local Street (Industrial Park Road/Crocus Hill Street)



Contract Achievements

Excellent quality of the work throughout the project.

Thin lifts, watering to aid in compaction, safe excavations (multiple trench boxes at times were required due to depth of excavations and sandy material).

Contractor performed all duties by the book.

Lots of complexity: deep structures (>20' depth), large storm sewer (60"), many utilities, multiple project phases to accommodate tourist & local traffic, business access, etc.

Sand Job

39



Getting Ready and Laying Pipe



Trench Boxes and Compaction



And there we are today, MnDOT's finest at work



The Ford dealer happy with their new road

43



And around and around



and around and around



and around and around we go



Thank You
Go raibh maith agat